



Expose Concrete Material

BANA RAZ

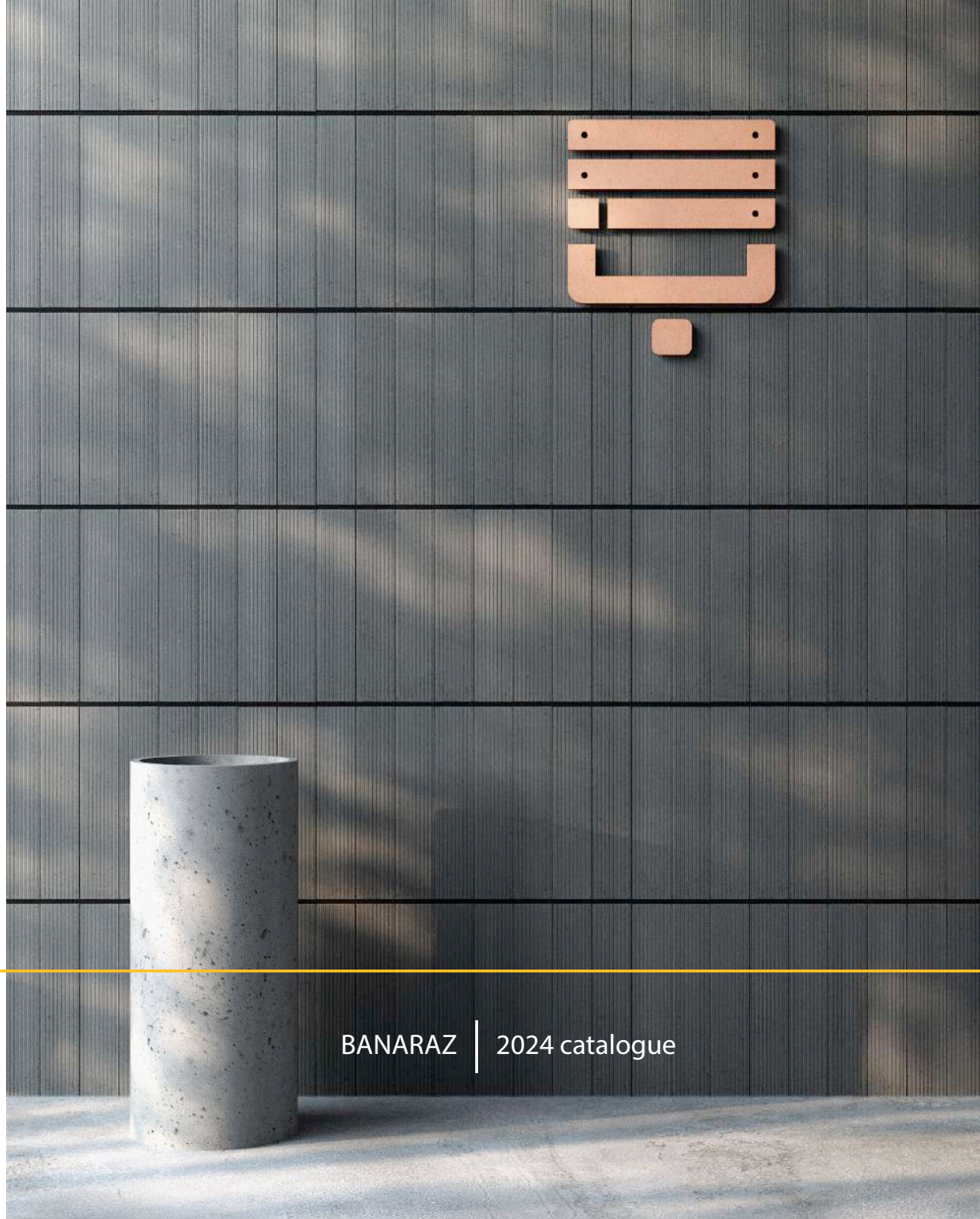
PORODUCTS CATALOGUE

Benaraz engineering and production group

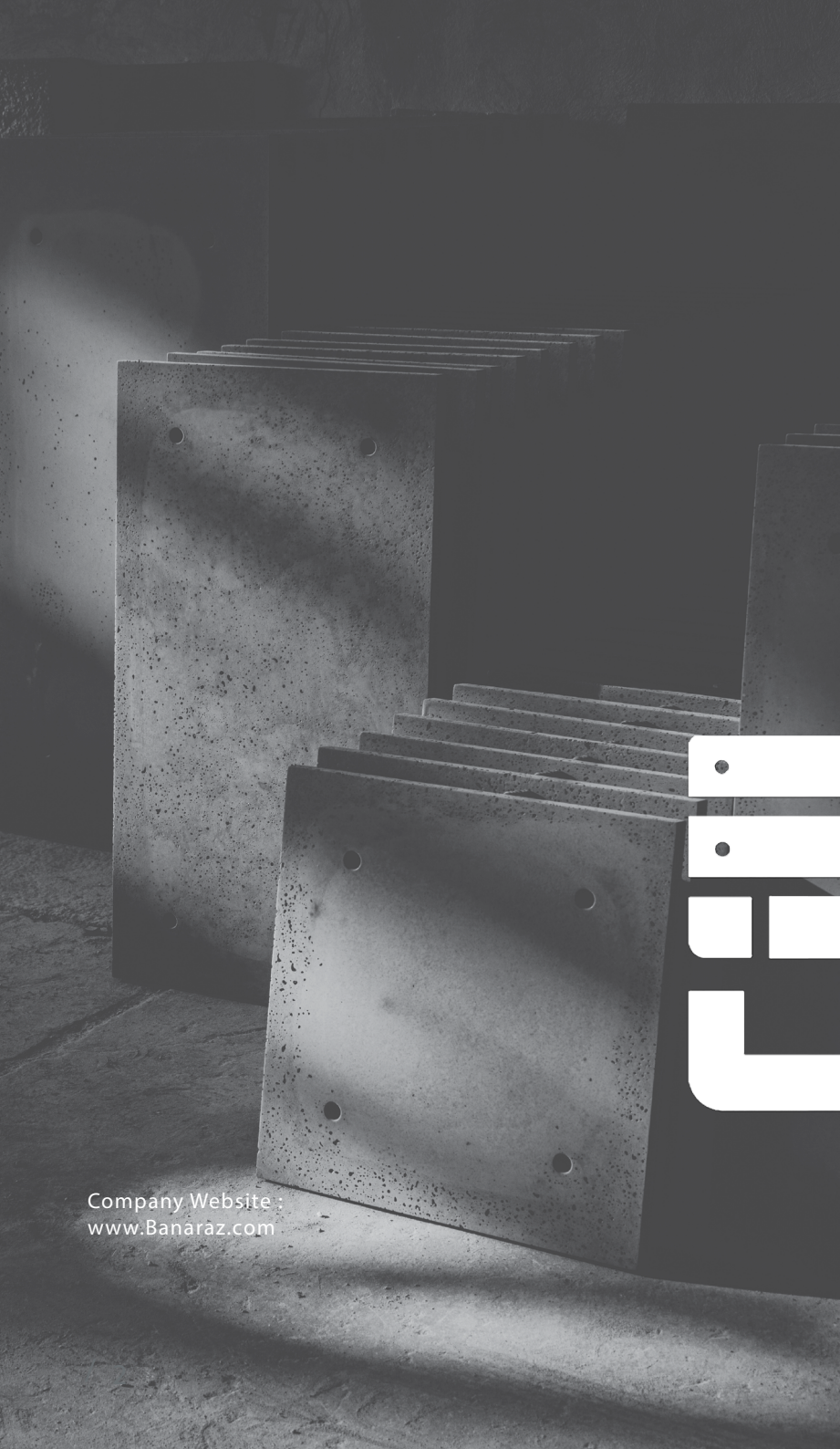
Made in Iran - Shiraz

+98 917 000 4570
+98 71 3648 0669

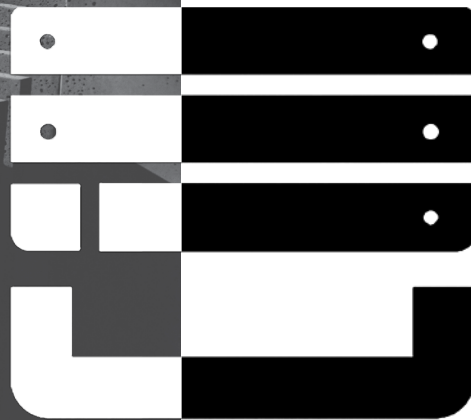
www.Banaraz.com



BANARAZ | 2024 catalogue



Company Website :
www.Banaraz.com



About Us

The Bana Raz Company, with a clear vision towards the production and supply of authentic and sustainable materials, began its activities in 2015. Bana Raz Company takes pride in being the first producer of concrete exposé and fire-resistant bricks in the southern region of Iran.

Among the company's primary goals, three general objectives can be highlighted:

- Creating direct and indirect employment opportunities by utilizing the skills and potential of young and experienced workforce.
- Achieving self-sufficiency in the production of concrete products in the southern region of Iran.
- Exporting these products to other countries to compete with similar foreign products.

Bana Raz Company is dedicated not only to crafting high-quality and authentic products but also to consistently advancing and updating its equipment and materials in alignment with global standards



TABLE OF CONTENTS

CONTENTS

- 04 TEXTURES DIVERSITY
- 06 DIMENSIONS
- 08 REINFORCEMENT
- 10 MASONRY SUPPORT
- 12 RECENTLY ADDED
- 14 BRICKS
- 30 SLABS
- 50 FLOORING

TEXTURES Diversity

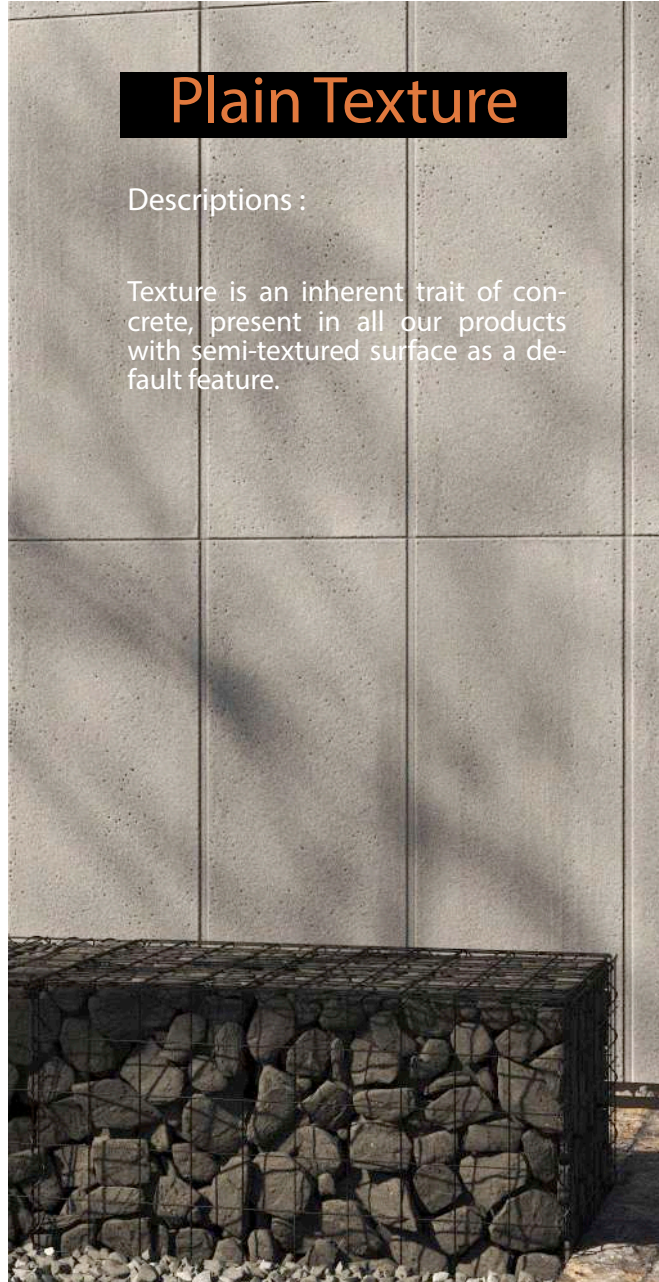
Descriptions :

Concrete molds with five different textures are available and can be custom-made according to the orders and designs of contractors and architects.

Plain Texture

Descriptions :

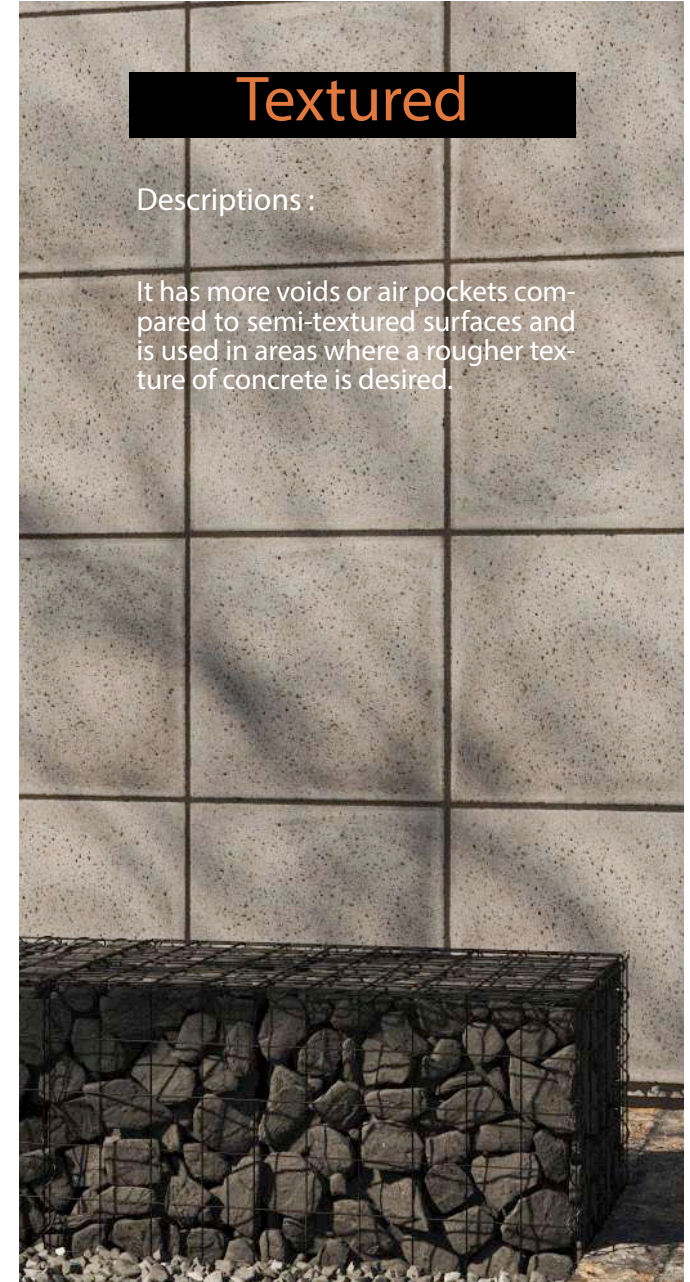
Texture is an inherent trait of concrete, present in all our products with semi-textured surface as a default feature.



Textured

Descriptions :

It has more voids or air pockets compared to semi-textured surfaces and is used in areas where a rougher texture of concrete is desired.



Rough Texture

Descriptions :

It has a natural texture that can harmonize with ce

Linear Texture

Descriptions :

It has a modern linear texture that can give a modern look to a space. Additionally, it can emphasize the Elongation in one direction of the space.

Rhythmic

Descriptions :

Rhythmic texture provides a contemporary design feature that accentuates the length and height of surfaces. It can be complemented with different dimensions of linear lights, thus making it a versatile option for creating unique visual effects.

Dimensions

Bricks :

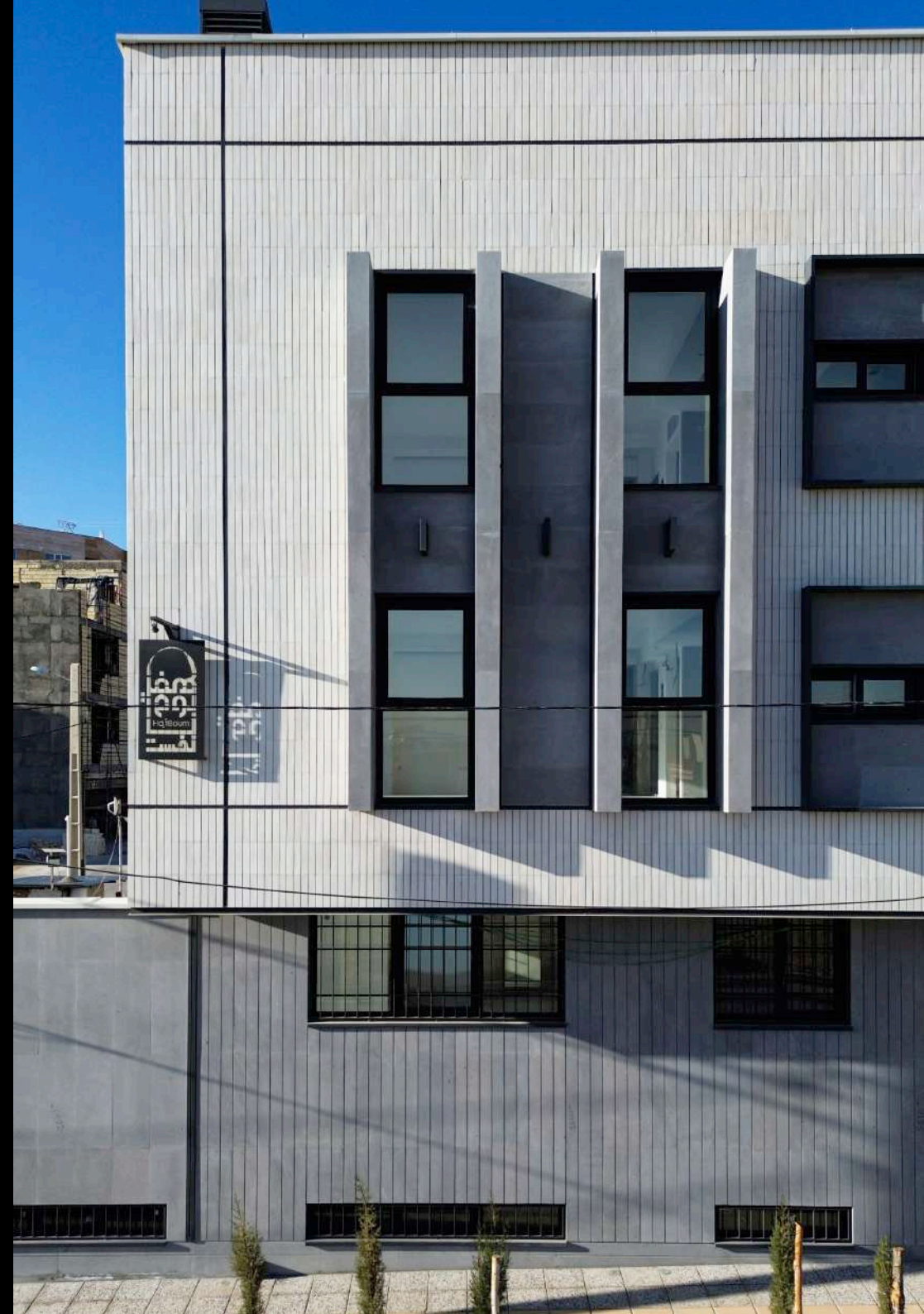
“Bana Raz” Company introduces concrete bricks as the third generation of bricks. Concrete bricks have similar dimensions to previous generations of bricks and even offer a greater variety of dimensions to meet the demands of contemporary design. The aim has been to address the shortcomings of previous generations and provide them with a new character in terms of texture and color.

Tiles :

They are not meant to replace other building materials; they have unique characteristics in terms of texture, color, and dimensions that cater to the specific needs of a particular spectrum of clients and contractors.

Flooring :

In addition to our exclusive flooring products, our other offerings are also suitable for practical flooring applications due to their high compressive strength, appropriate thickness, durability, and long-lasting color and form retention, all of which are inherent properties of concrete.



Size Chart



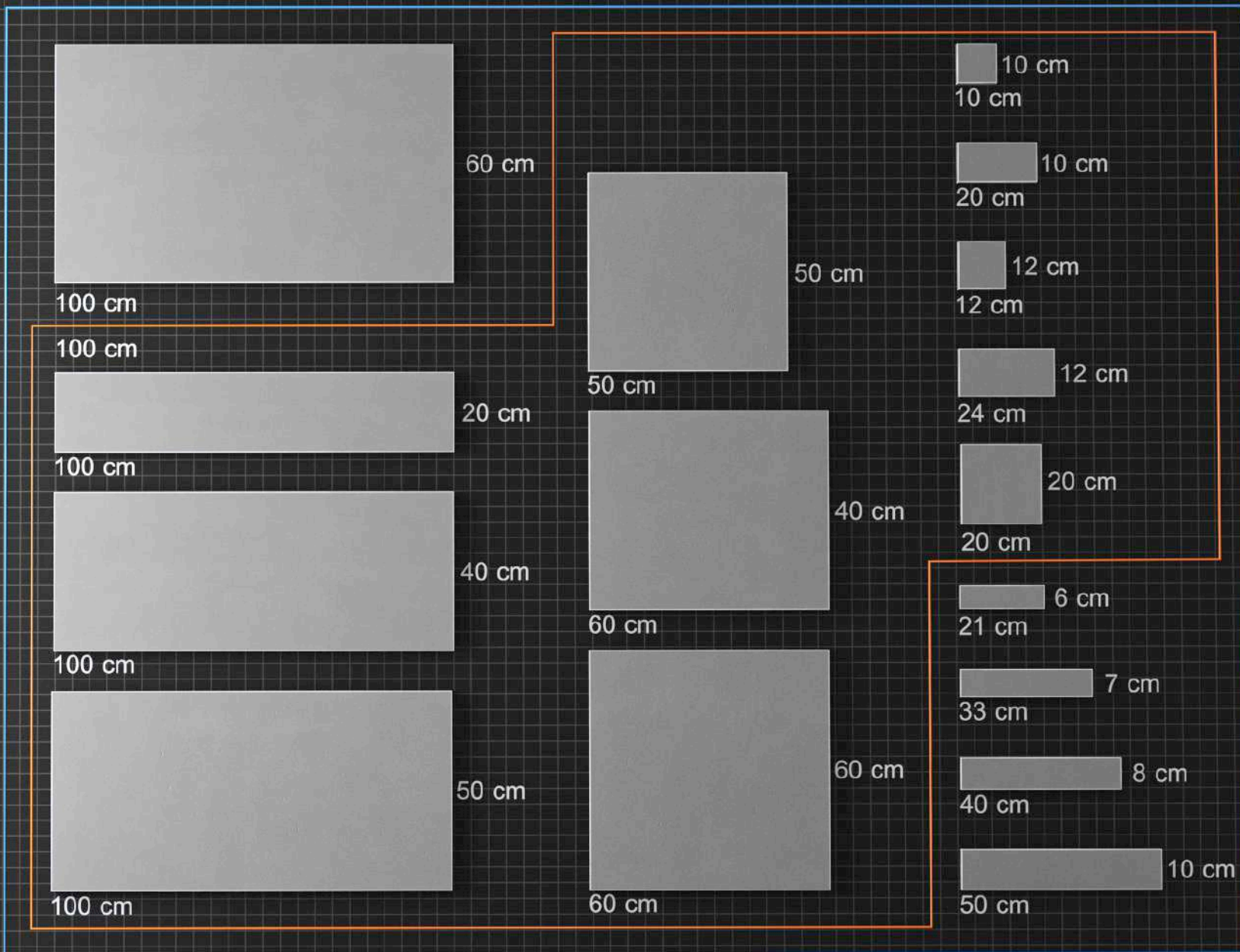
WALL

These tiles are recommended not only for interior walls but also for facades.



FLOOR

These tiles are more recommended for use in flooring.



Reinforcement

Descriptions :

In concrete products, reinforcement is a crucial and important factor that contributes to the continuity and increased resistance of the product against wear, tension, and stress. Bana Raz employs two methods of reinforcement in its concrete plaques: using mesh reinforcement and utilizing fibers.

For the collection of concrete bricks with a weight of approximately one kilogram, only the use of fibers is sufficient as reinforcement. This reinforcement enhances the product's durability and its ability to withstand various stresses.





masonry support

Descriptions :

The presence of masonry supports is one of the key elements in various methods of execution. Bana Raz Company takes into consideration this diversity in its products based on the needs of contractors.

The masonry supports you see in the image are embedded within the product in a circular pattern with iron corners for dry installation.

In the wet or mortar-based installation method, using wire masonry support and fan-shaped masonry support made of galvanized material, as well as adding fine sand behind lightweight products, approximately one kilogram, can lead to better integration with the mortar, ultimately speeding up the installation process and enhancing durability.

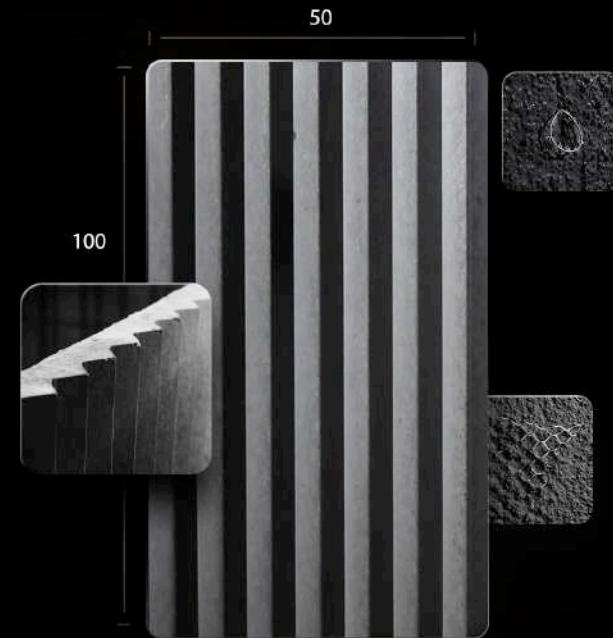




RECENTLY ADDED

Banaraz introduces its new slabs with innovative designs and textures. These tiles, with their unique design and attractive textures, contribute to creating a pleasant rhythm and diversity in the space.

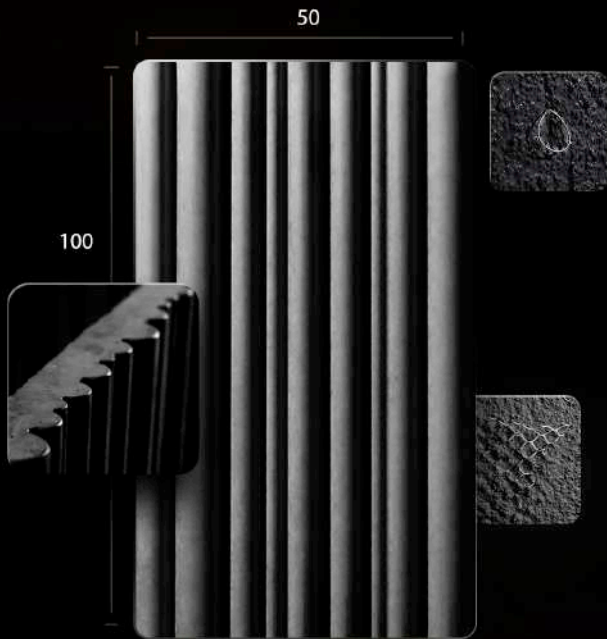
Corner Concrete Slab



Available in 5 shades of gray



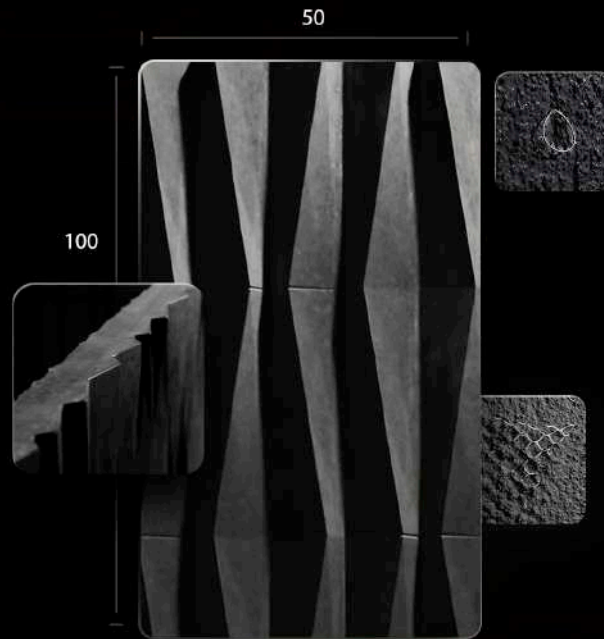
Afra Concrete Slab



Available in 5 shades of gray



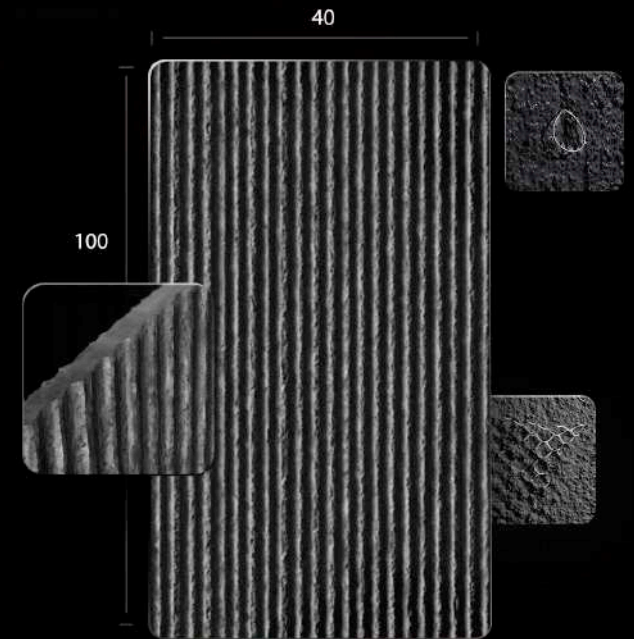
Chiseled Concrete Slab



Available in 5 shades of gray



Zebreh Concrete Slab

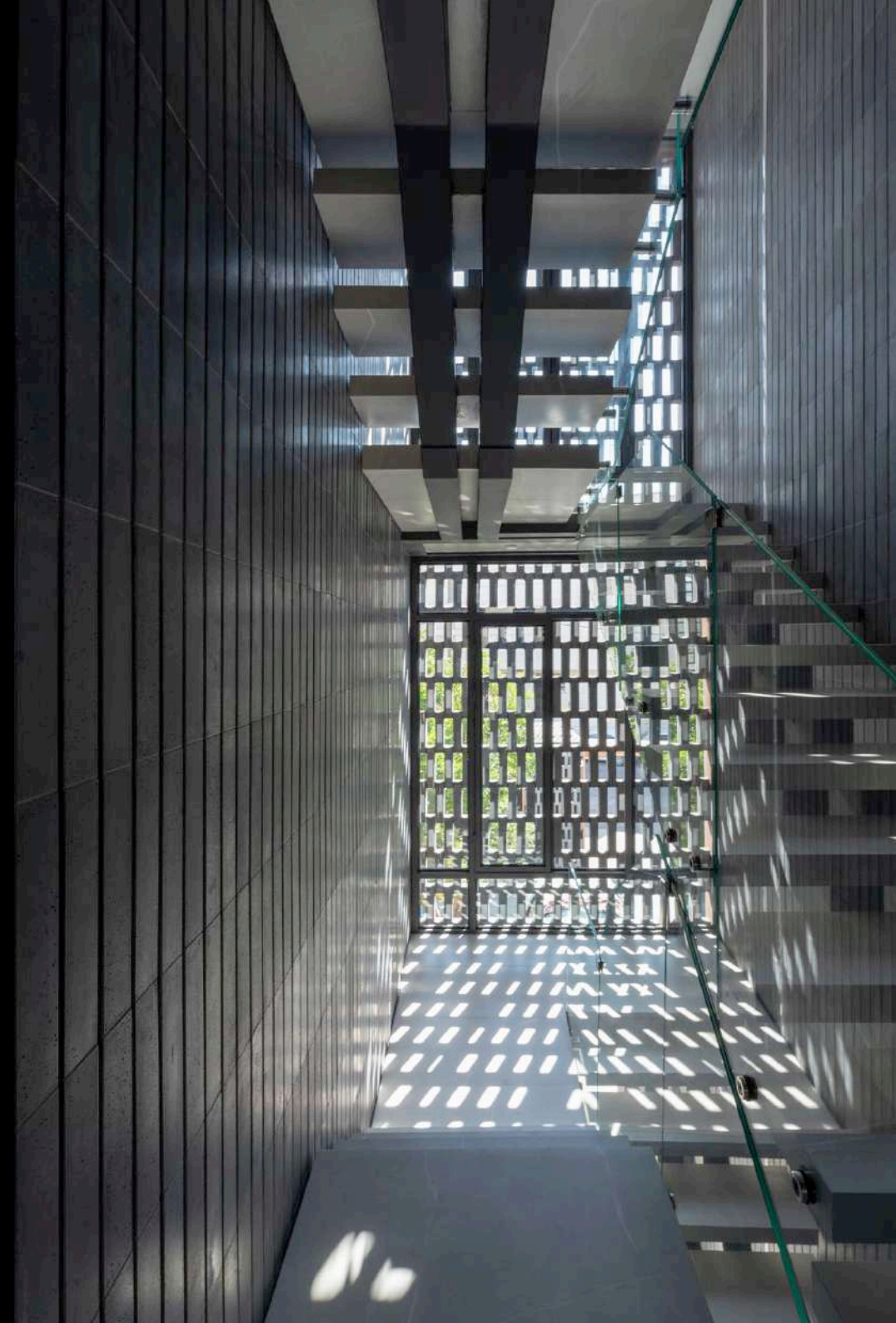


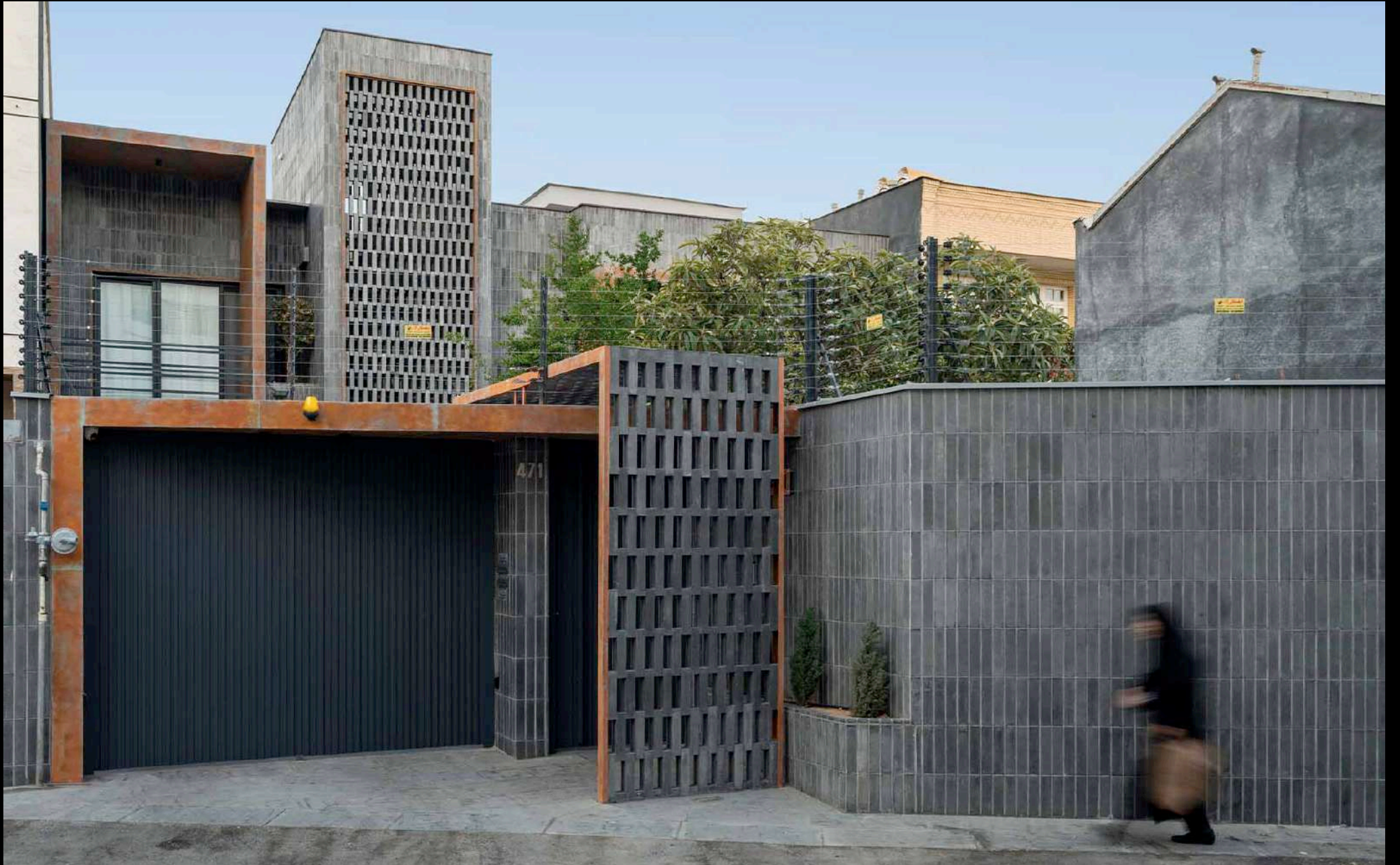
Available in 5 shades of gray



BRICKS

Bana Raz Company introduces concrete bricks as the third generation of bricks. Concrete bricks have similar dimensions to previous generations of bricks and even offer a greater variety of dimensions to meet the demands of contemporary design. The aim has been to address the shortcomings of previous generations and provide them with a new character in terms of texture and color.







Old-style texture

Concrete Brick

- Dimensions | 6 cm * 21 cm
- Thickness | 1.2 cm
- Color quality |

COLOR PALLET



w h i t e



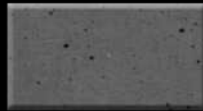
c l o u d y



c o d e - 1



c o d e - 2



c o d e - 3



c o d e - 4



c o d e - 5

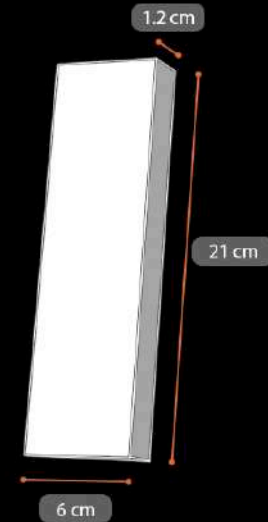
Vintage-Style Concrete Brick:

This brick, with its unique texture and practical, familiar dimensions, can be an excellent choice for brick enthusiasts. Its slim profile allows it to be used in interior spaces for distinctive and beautiful facade. It can be installed using either adhesive or mortar methods. Each brick weighs 500 grams.

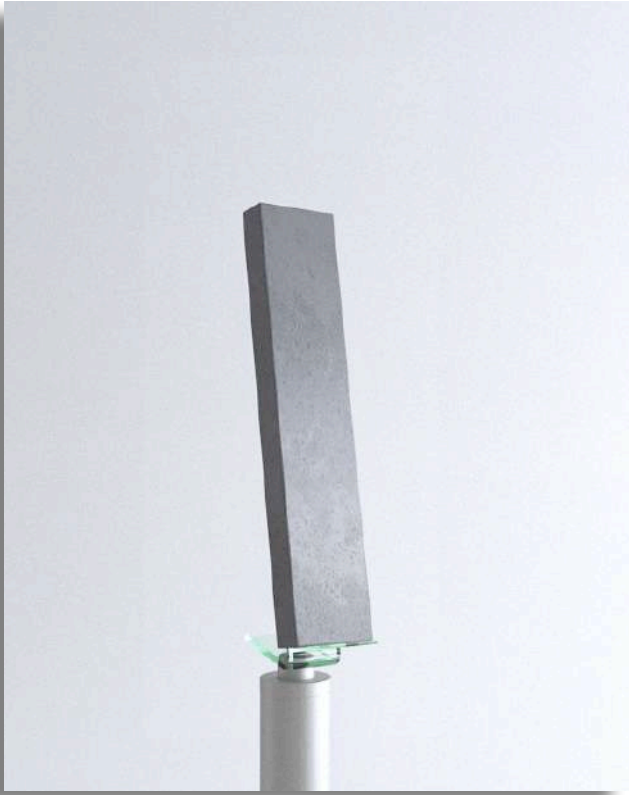
Texture Quality

Rough Texture

DIMENSIONS





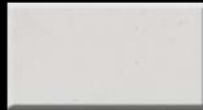


Clean texture

Concrete Brick

- Dimensions | 7 cm * 33 cm
- Thickness | 2.5 cm
- Color quality |

COLOR PALLET



w h i t e



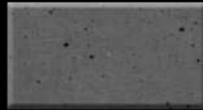
c l o u d y



c o d e - 1



c o d e - 2



c o d e - 3



c o d e - 4



c o d e - 5

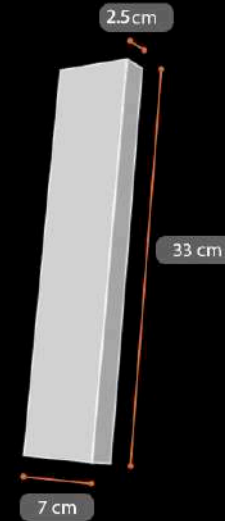
New-Style Concrete Brick:

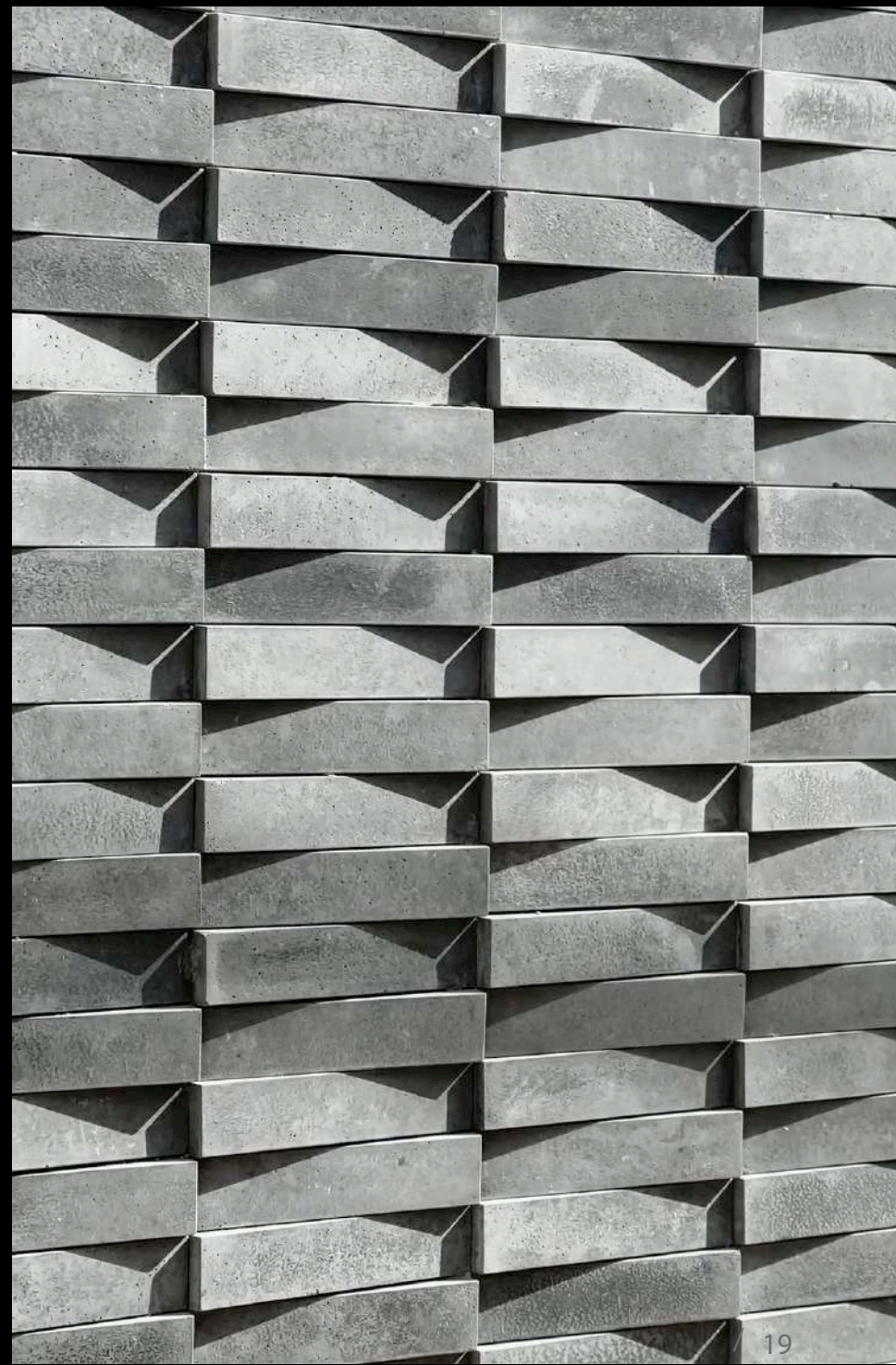
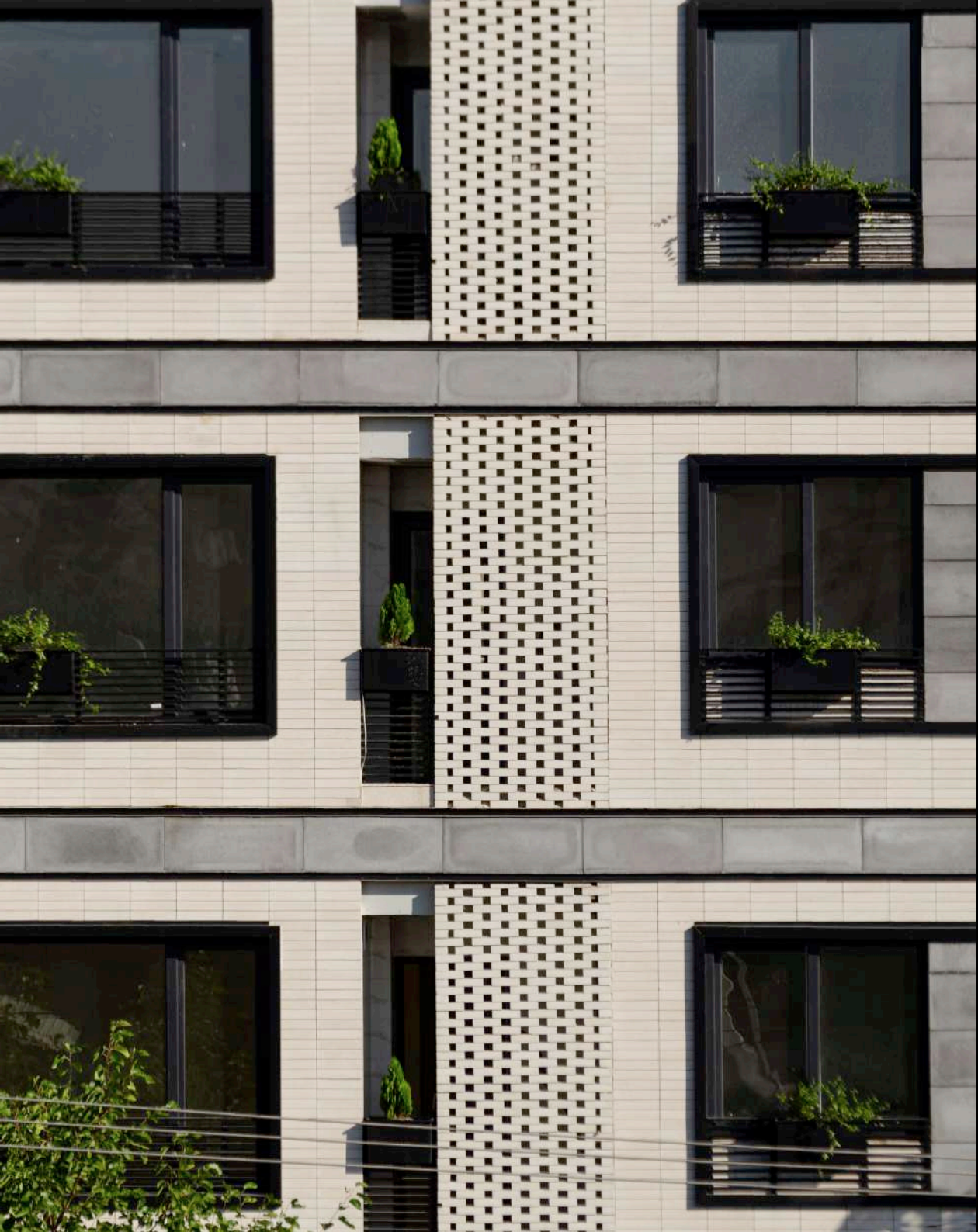
This brick, with its widely used dimensions available in gray and white, has recently gained special attention from architects and builders. Its lighter weight compared to similar products, along with the inclusion of fasteners, allows for quicker and higher-quality installation.

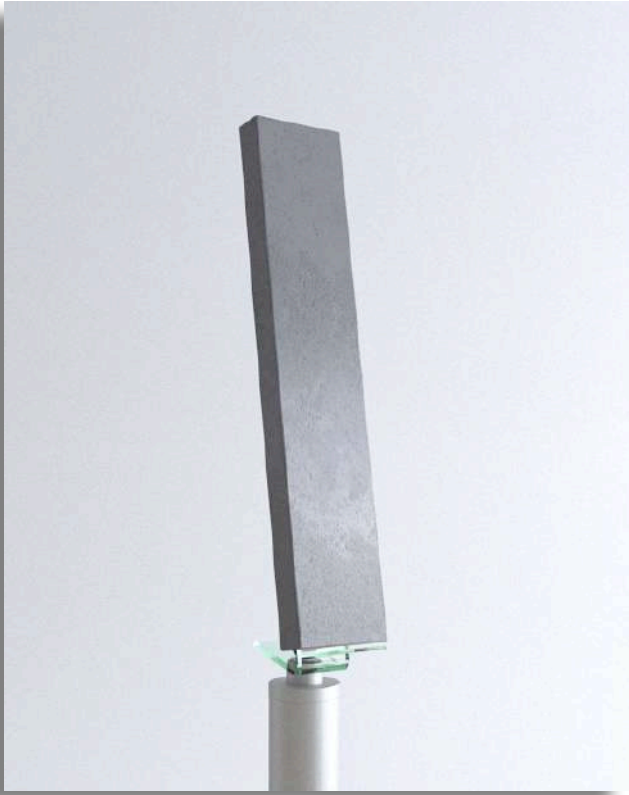
Texture Quality:

Plain Texture

Dimensions:







Clean texture

Concrete Brick

- Dimensions | 8 cm * 40 cm
- Thickness | 3 cm
- Color quality | 

COLOR PALLET



w h i t e



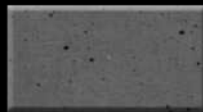
c l o u d y



c o d e - 1



c o d e - 2



c o d e - 3



c o d e - 4



c o d e - 5

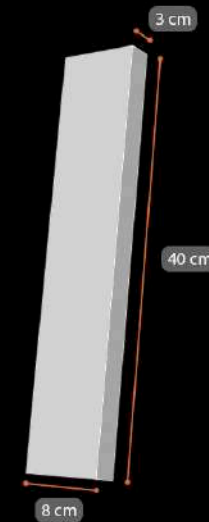
8*40 Concrete Brick:

If you have incorporated bricks into your design and want a better elongation compared to the standard sizes available in the market, you can use this concrete brick.

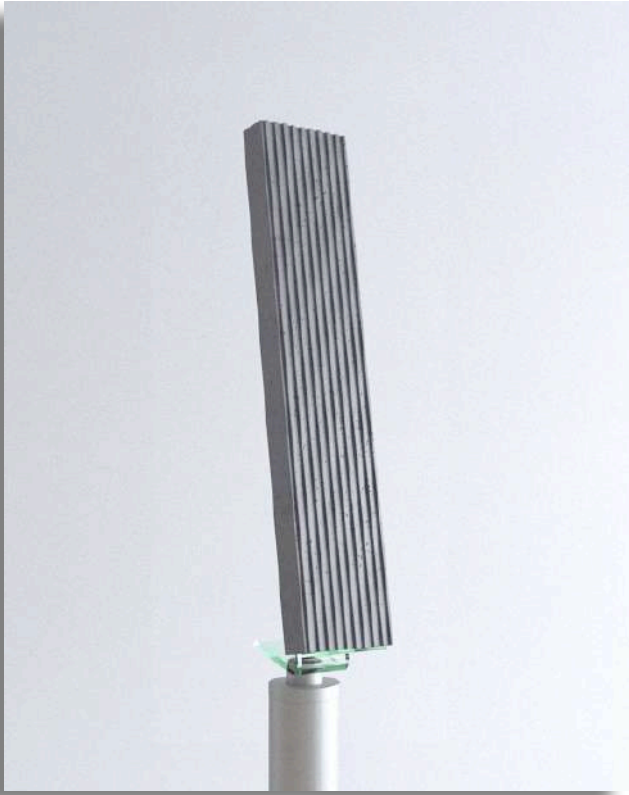
Texture Quality:

Plain Texture

Dimensions:







Linear texture

Concrete Brick

- Dimensions | 8 cm * 40 cm
- Thickness | 3 cm
- Color quality | 

COLOR PALLET



w h i t e



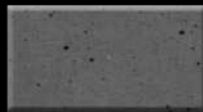
c l o u d y



c o d e - 1



c o d e - 2



c o d e - 3



c o d e - 4



c o d e - 5

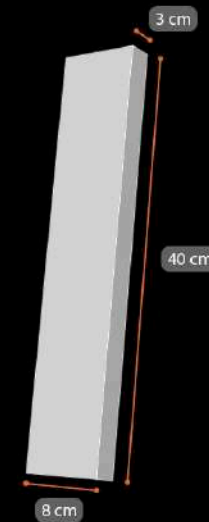
40*8 Linear Concrete Brick:

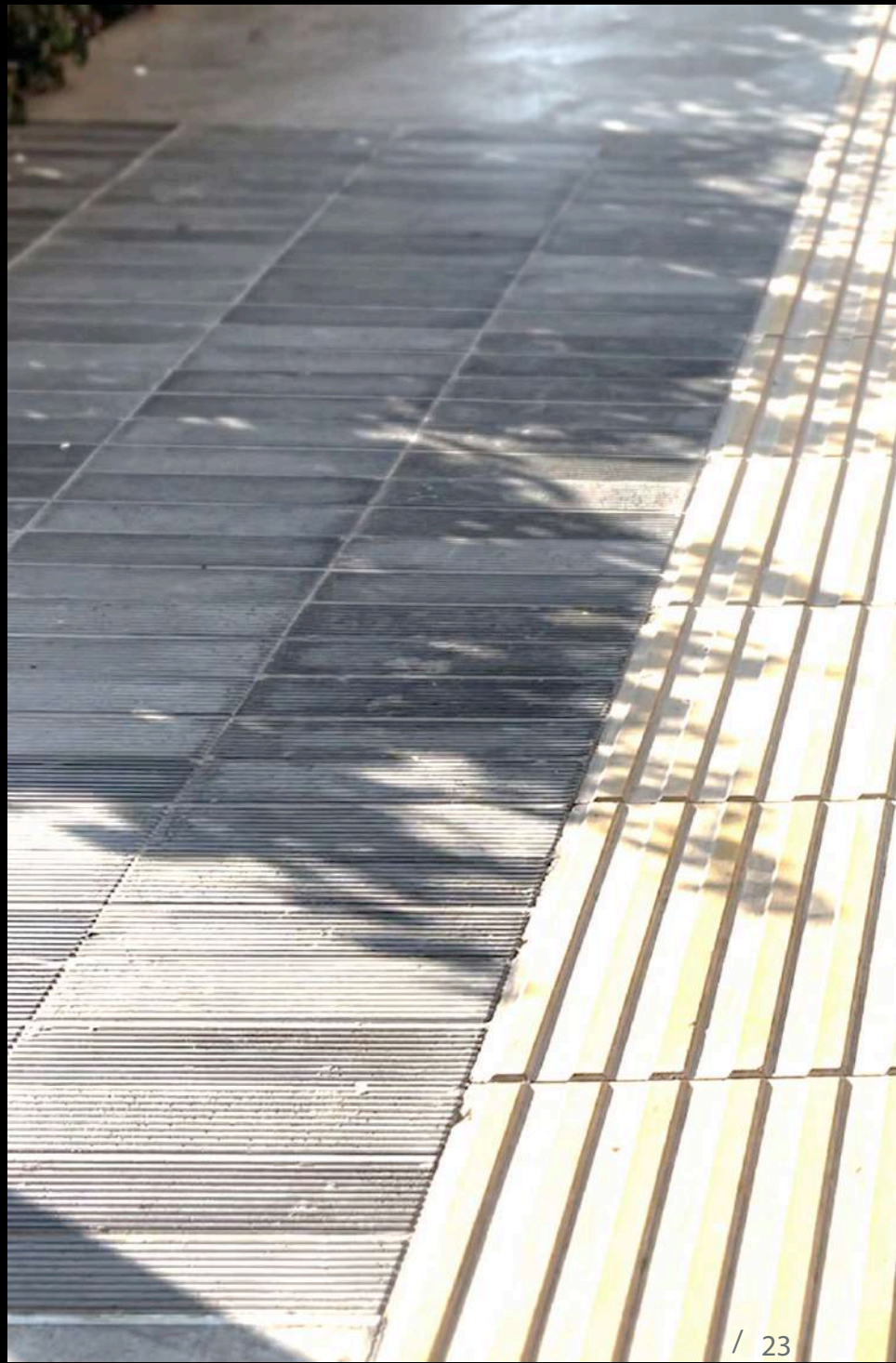
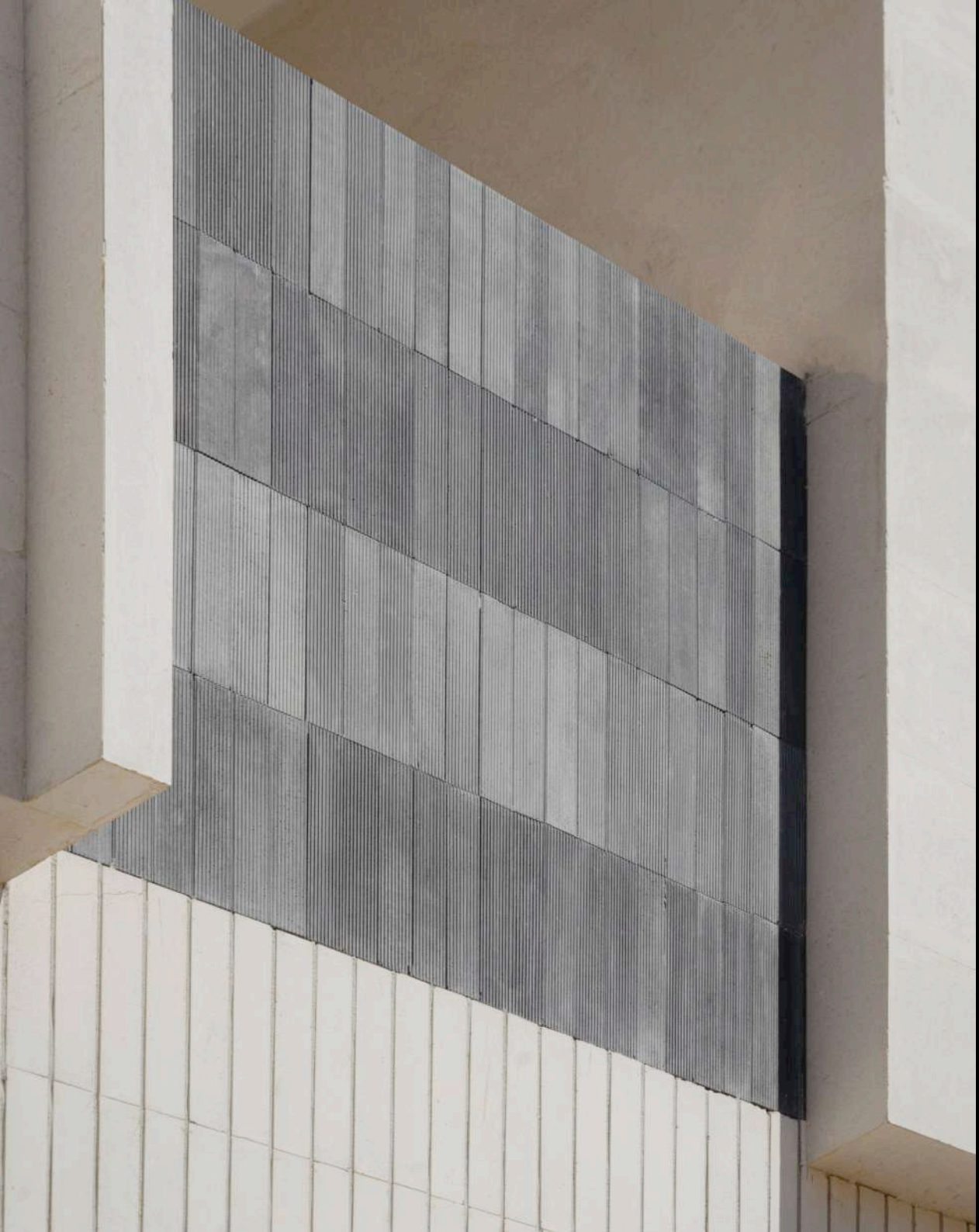
With its unique shape and dimensions, this brick can emphasize elongation in brick designs, whether in the horizontal or vertical axis. Additionally, it provides better light and shadow effects in your lighting, enhancing the visual appeal of your facade.

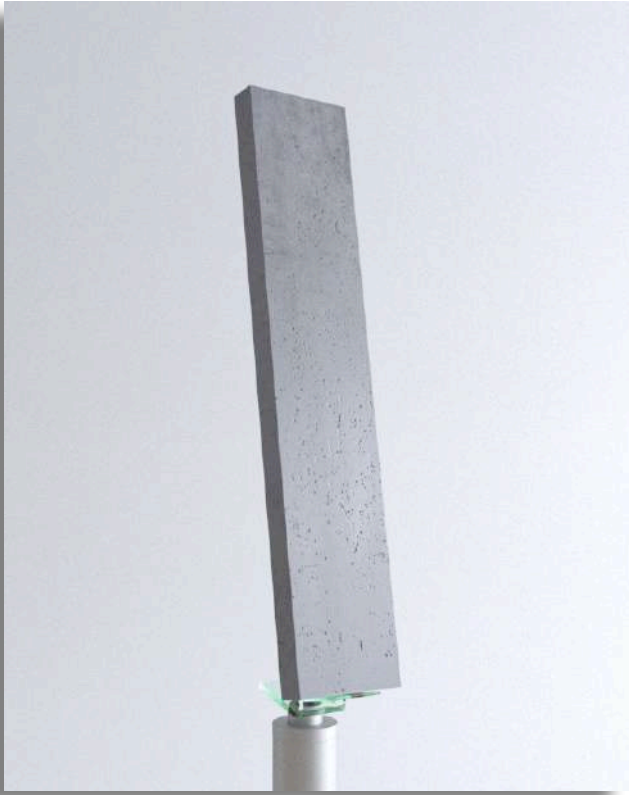
Texture Quality:

Linear Texture

Dimensions:







Clean texture

Concrete Brick

- Dimensions | 10 cm * 50 cm
- Thickness | 3 cm
- Color quality |

COLOR PALLET



w h i t e



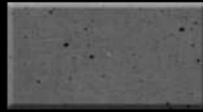
c l o u d y



c o d e - 1



c o d e - 2



c o d e - 3



c o d e - 4



c o d e - 5

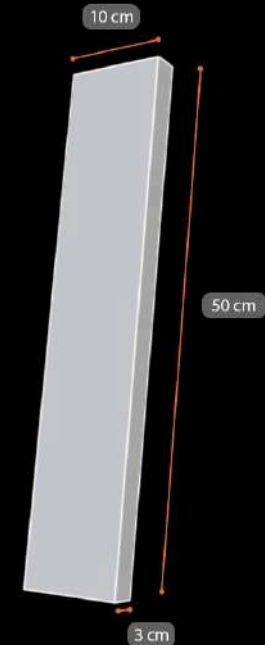
50*10 Concrete Brick:

With its unique dimensions and texture, this brick can significantly contribute to a modern design. Its rarity will undoubtedly enhance the uniqueness of your facade.

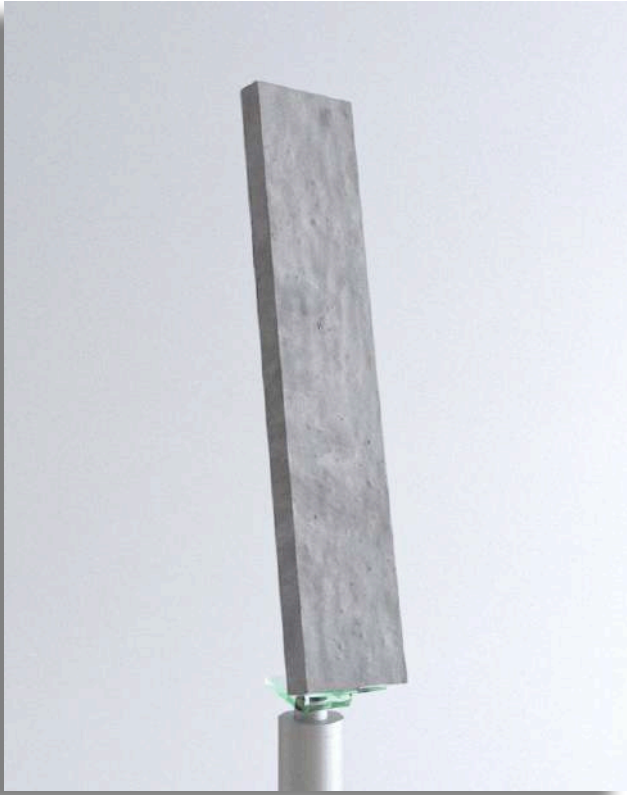
Texture Quality:

Plain Texture

Dimensions:







Rock texture

Concrete Brick

- Dimensions | 10 cm * 50 cm
- Thickness | 3 cm
- Color quality | 

COLOR PALLET



w h i t e



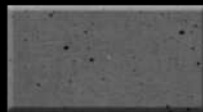
c l o u d y



c o d e - 1



c o d e - 2



c o d e - 3



c o d e - 4



c o d e - 5

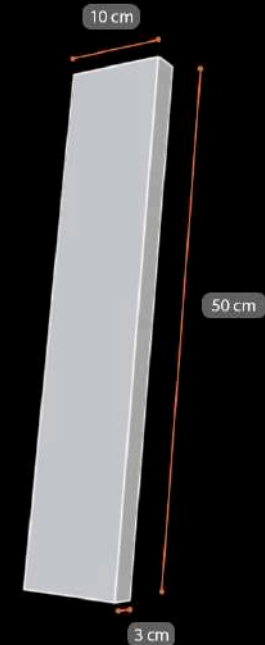
50*10 Rocky Concrete Brick :

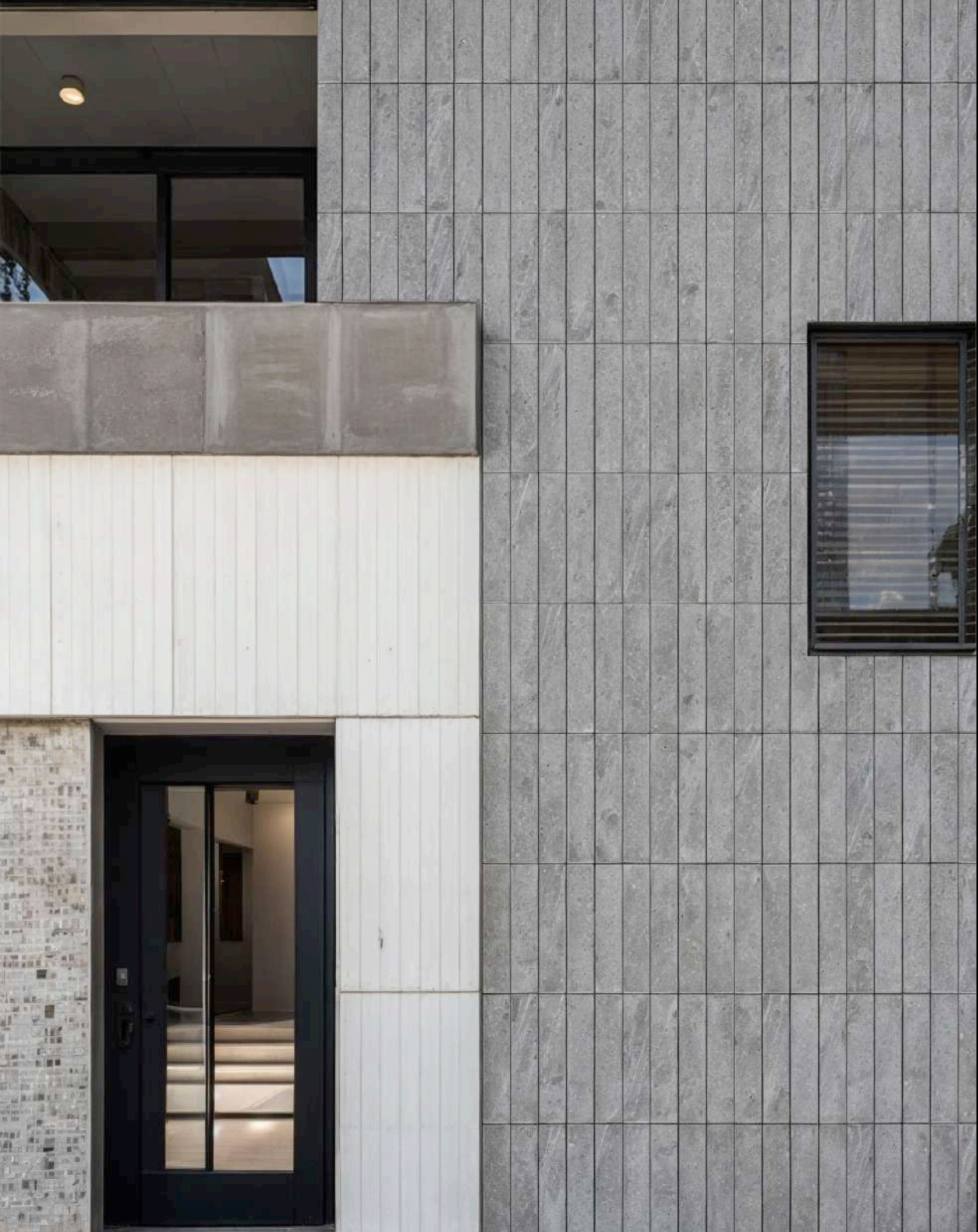
A product exclusively designed, molded, and produced by Banaraz Company. Based on the needs of architects in design, it can significantly assist architects with its practical and attractive dimensions, as well as its unique surface texture.

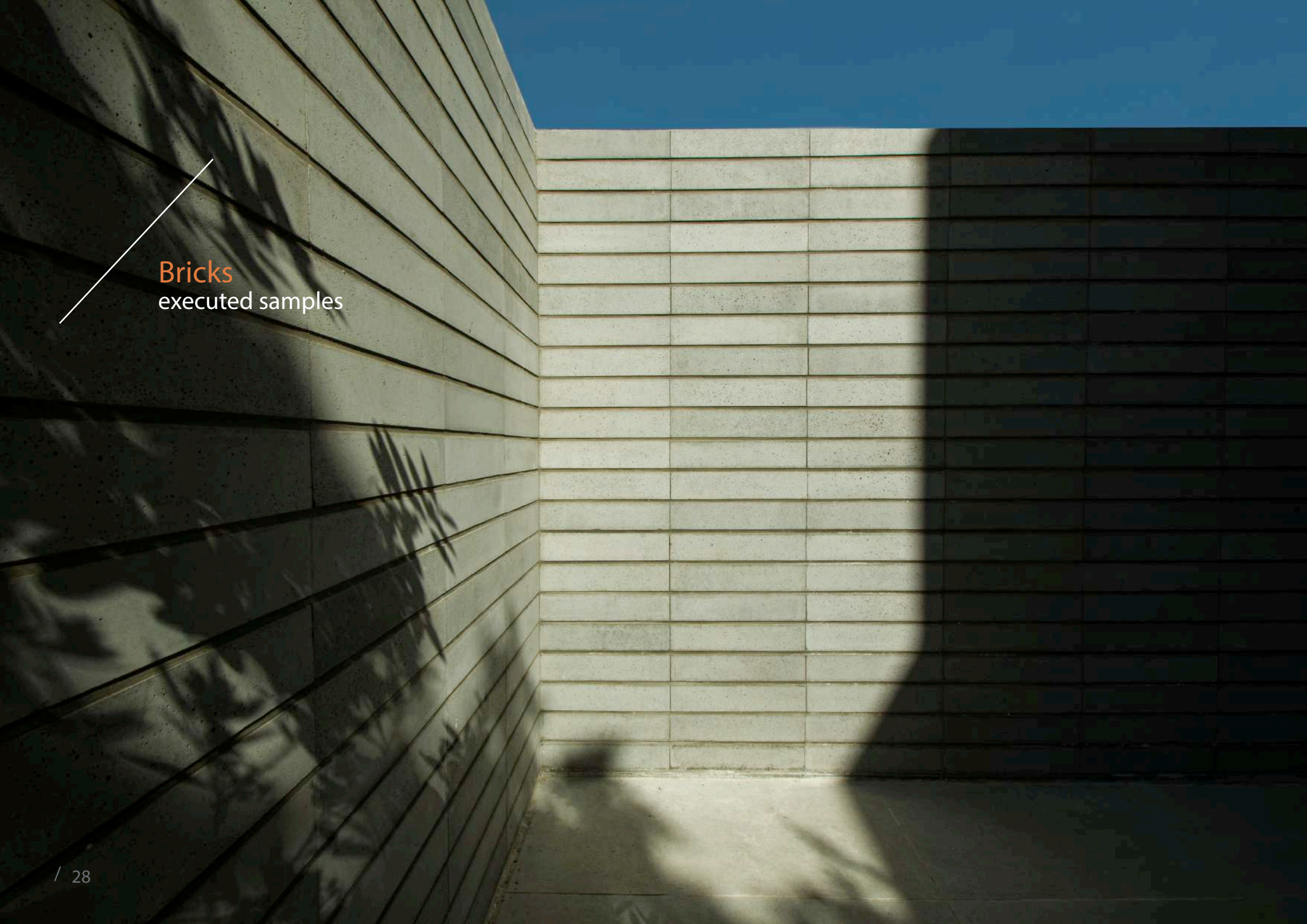
Texture Quality:

Rough Texture

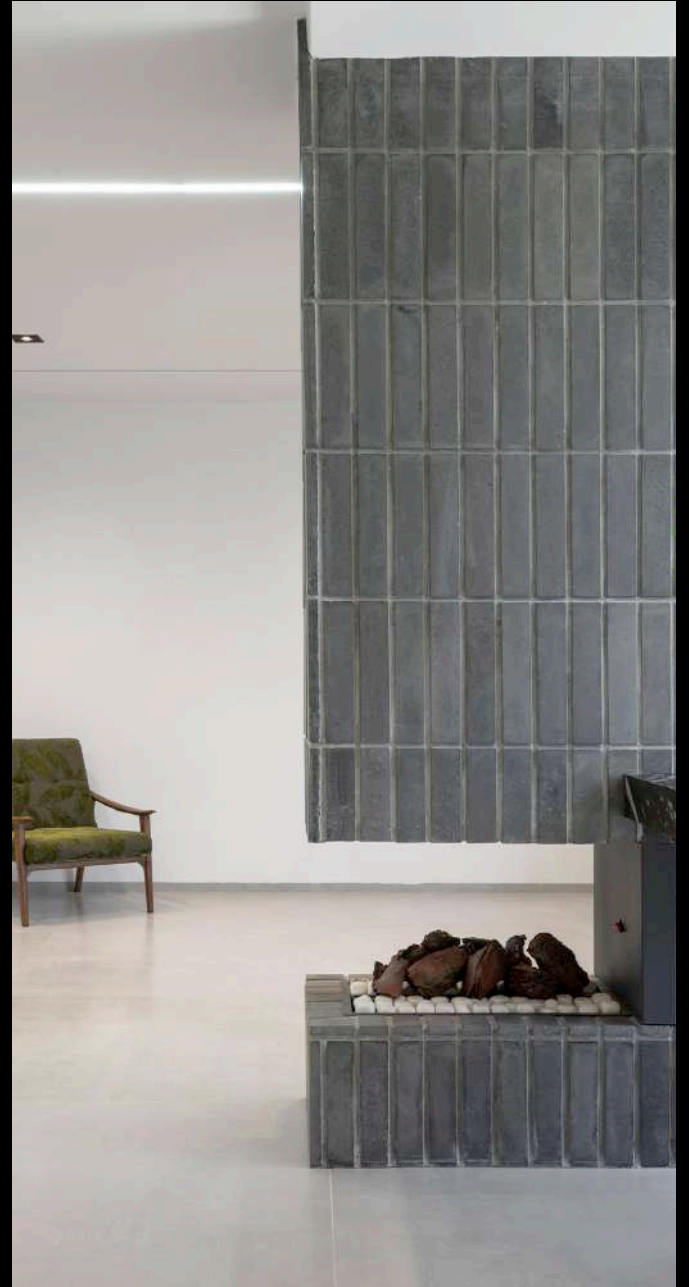
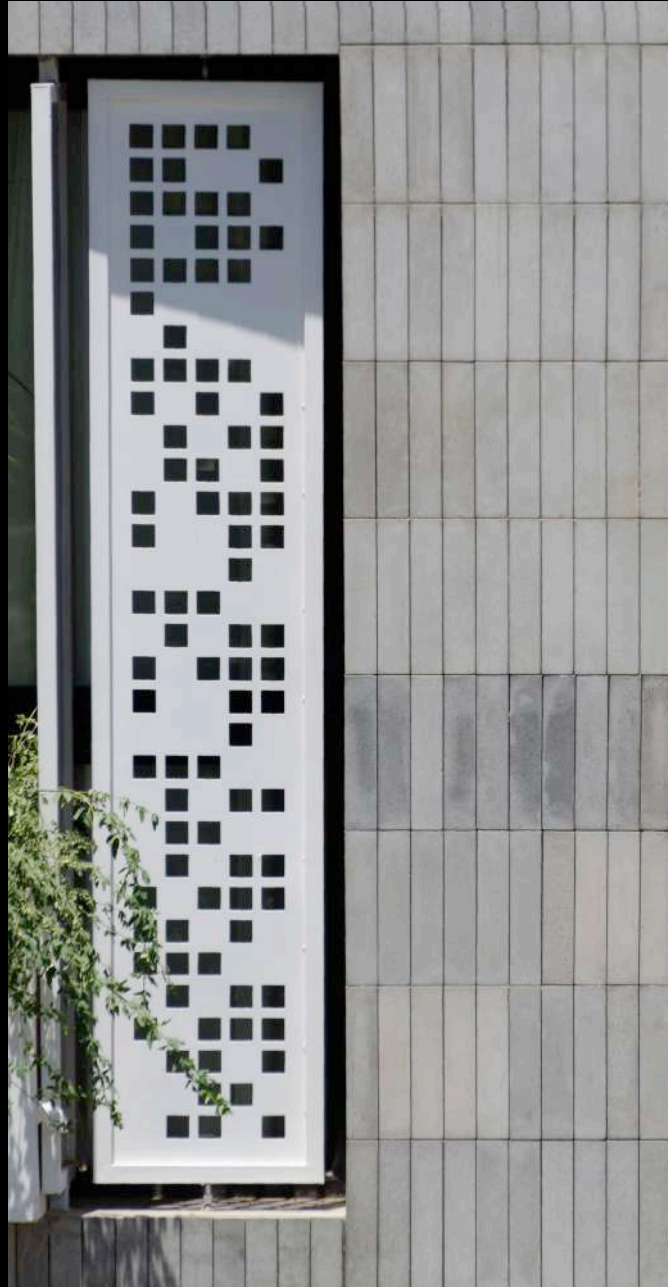
Dimensions:







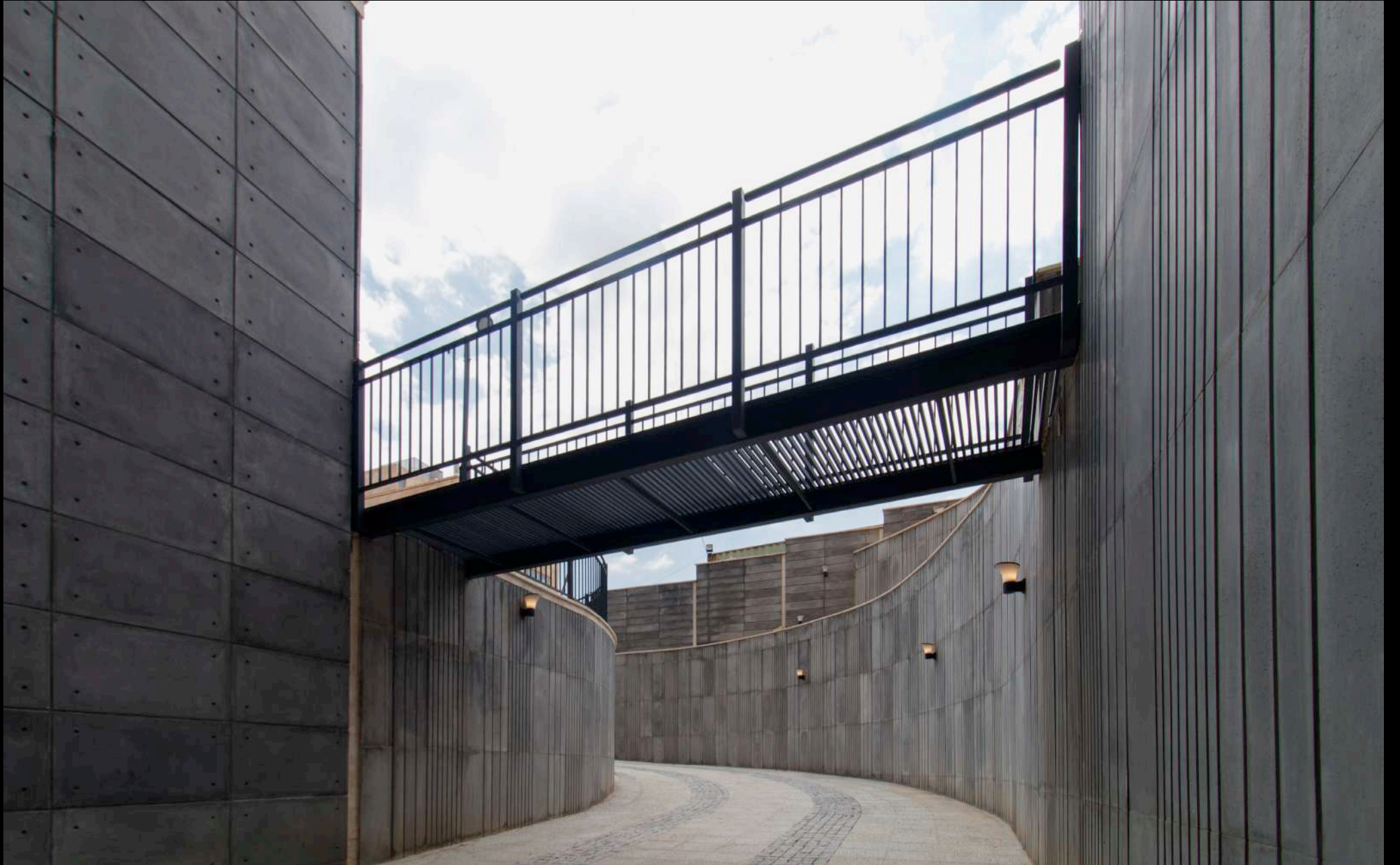
Bricks
executed samples

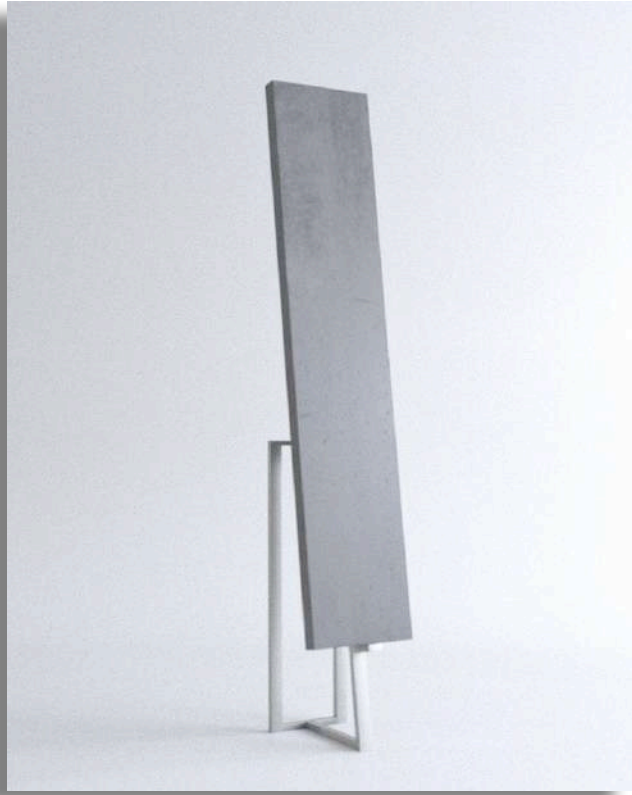


SLABS

They are not meant to replace other building materials; they have unique characteristics in terms of texture, color, and dimensions that cater to the specific needs of a particular spectrum of clients and contractors.







Clean texture

Concrete Tiles

- Dimensions | 100 cm * 20 cm
- Thickness | 3 cm
- Color quality |

COLOR PALLET



w h i t e



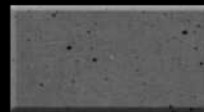
c l o u d y



c o d e - 1



c o d e - 2



c o d e - 3



c o d e - 4



c o d e - 5

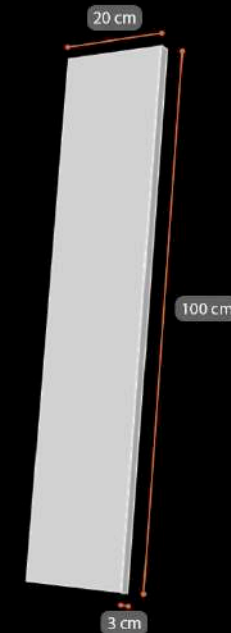
20*100 Concrete Slab :

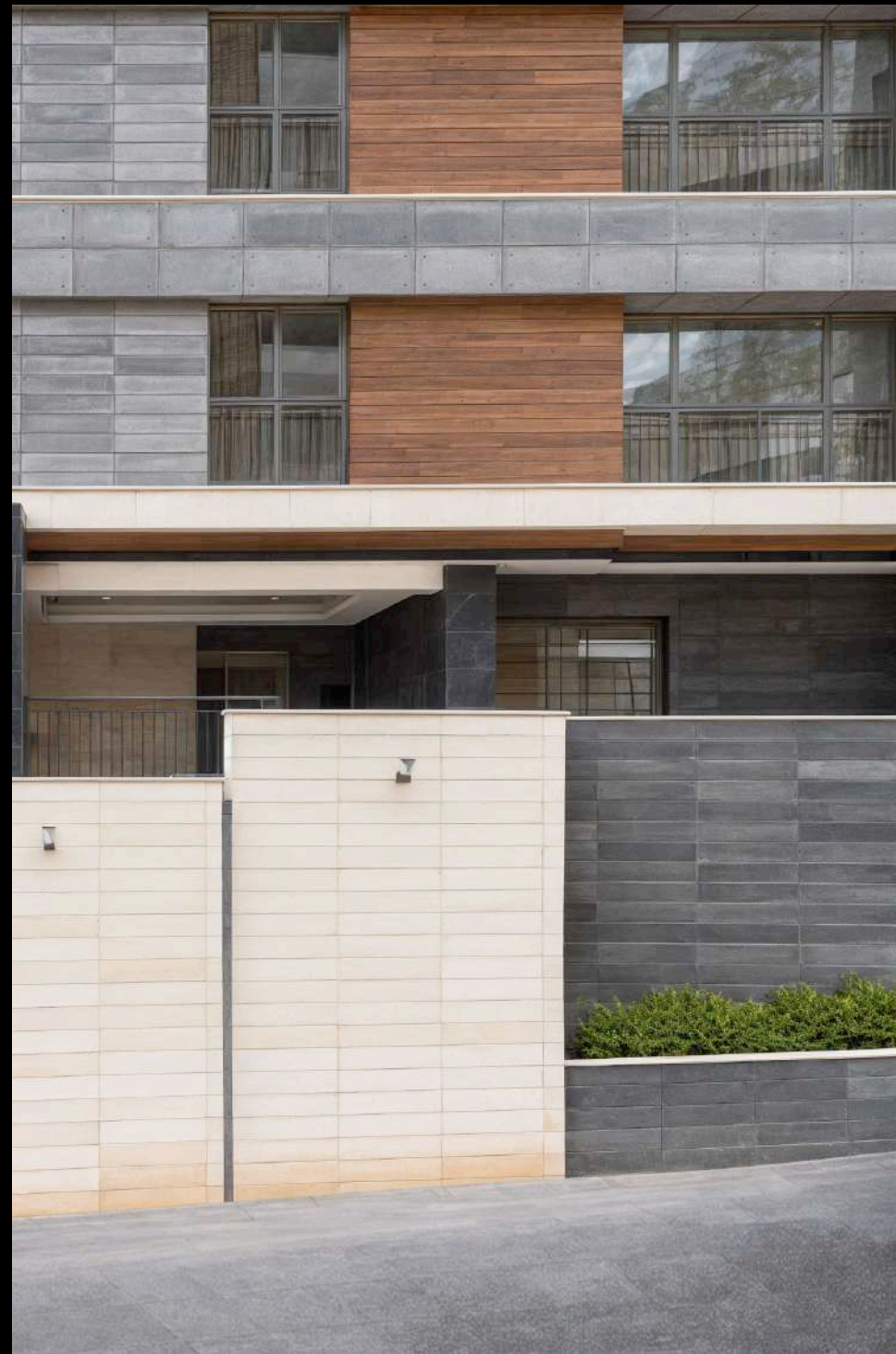
A product with suitable dimensions for both facade and flooring, featuring a completely simple texture and surface. This product can create an elegant elongated effect in your space, both horizontally and vertically.

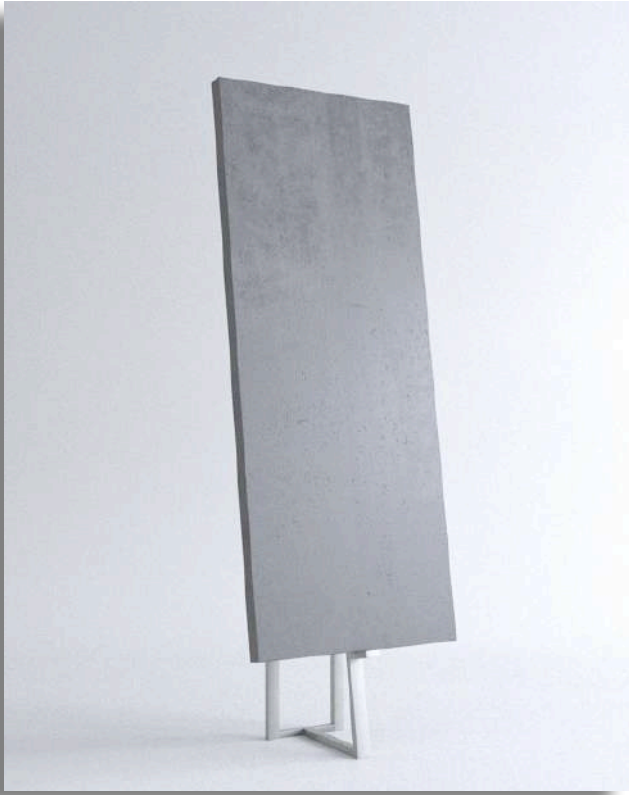
Texture Quality:

Plain Texture

Dimensions:







Clean texture

Concrete Flooring

- Dimensions | 160 cm * 40 cm
- Thickness | 3 cm
- Color quality |

COLOR PALLET



w h i t e



c l o u d y



c o d e - 1



c o d e - 2



c o d e - 3



c o d e - 4



c o d e - 5

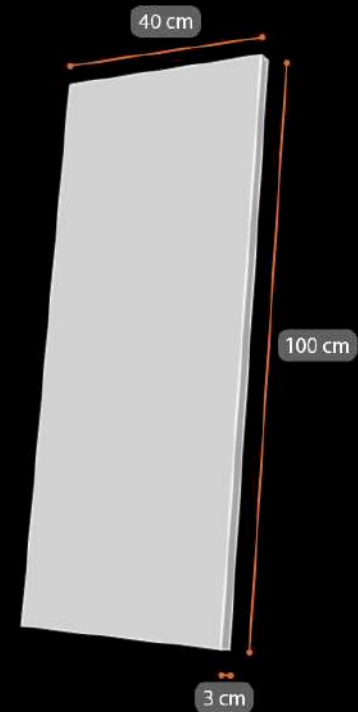
40*100 Concrete Slab :

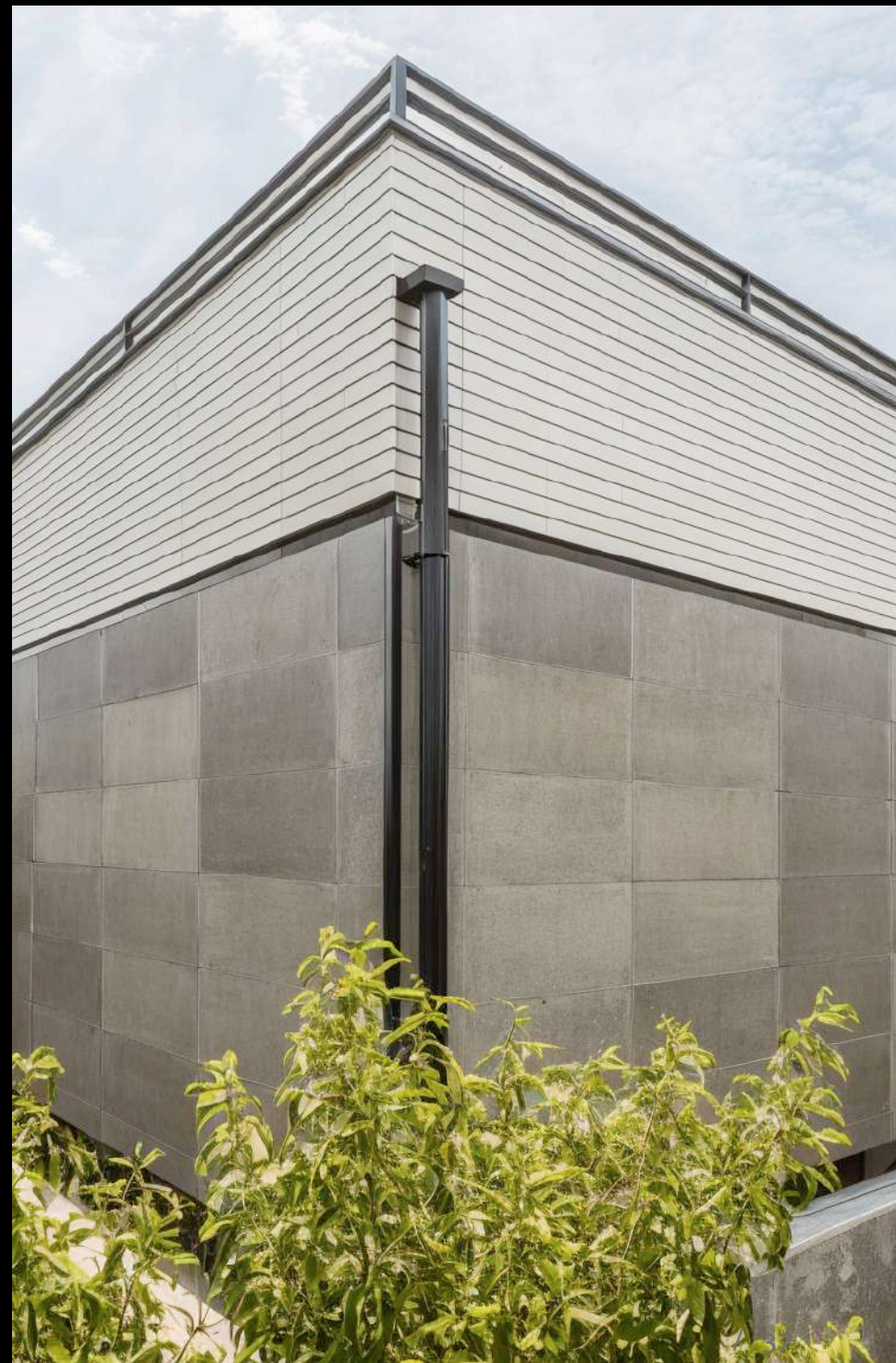
This concrete slab can be a good substitute for stone. With familiar and suitable dimensions for architects and builders, it features a smooth, texture-free surface, making it highly useful for exterior facade, flooring, and parking structure walls.

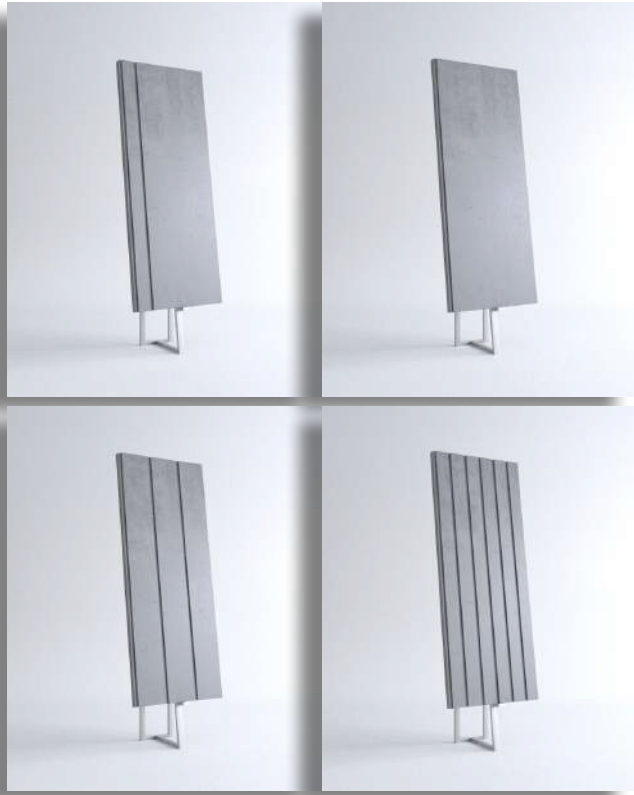
Texture Quality:

Plain Texture

Dimensions:







Linear texture

Concrete Tiles

- Dimensions | 100 cm * 40 cm
- Thickness | 3 cm
- Color quality |

COLOR PALLET



w h i t e



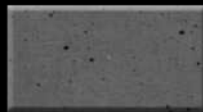
c l o u d y



c o d e - 1



c o d e - 2



c o d e - 3



c o d e - 4



c o d e - 5

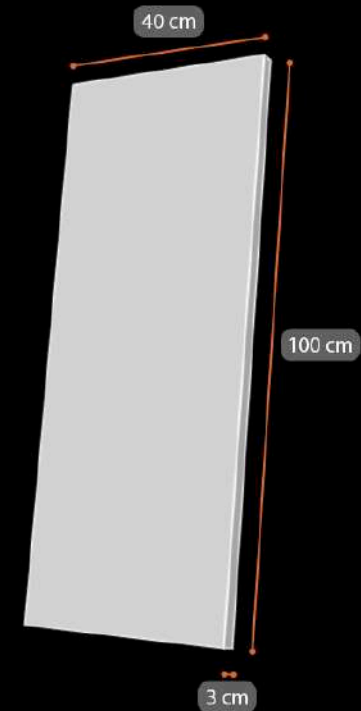
Linear Concrete Slab :

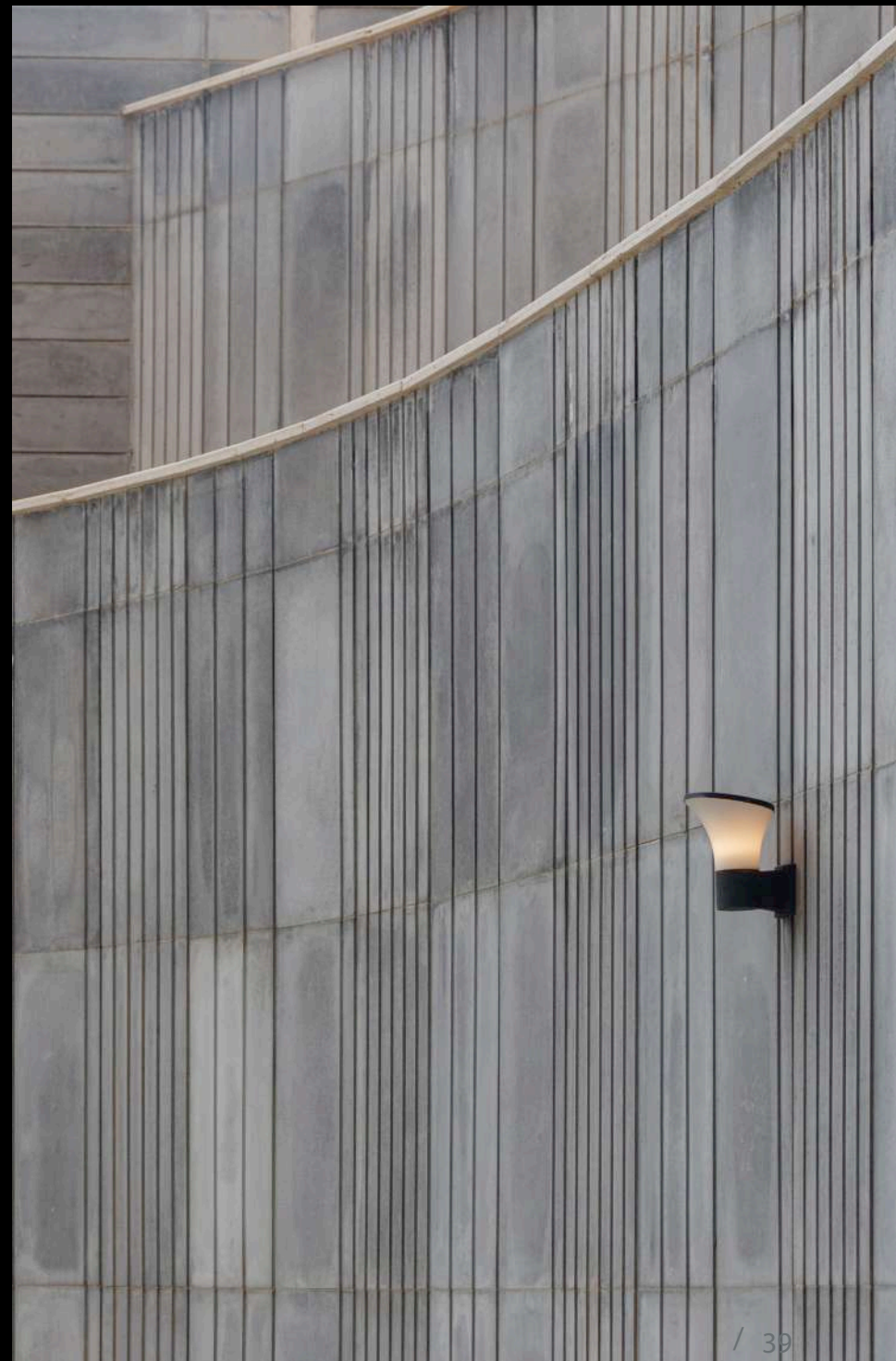
This concrete slab comes in four variations: plain, single-line, double-line, and five-line, with jointing incorporated at the end of each slab (no additional jointing cost during installation). It can be installed in various patterns, such as symmetry, repetition, rhythm, or even individually. The lines designed on this slab add a sense of order and beauty to your design and space.

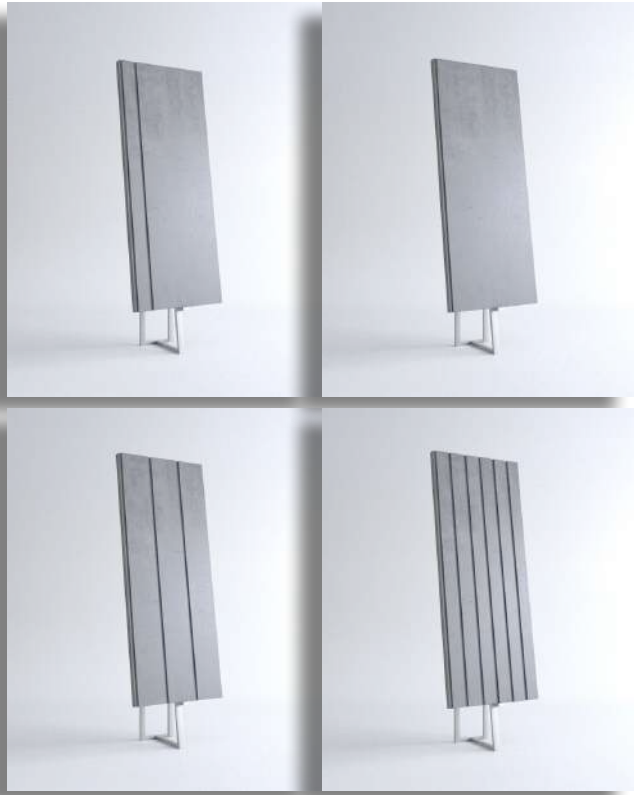
Texture Quality:

Plain/Linear Texture

Dimintions:







Linear texture

Concrete Tiles

- Dimensions | 100 cm * 40 cm
- Thickness | 3 cm
- Color quality |

COLOR PALLET



w h i t e



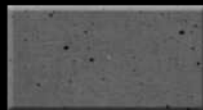
c l o u d y



c o d e - 1



c o d e - 2



c o d e - 3



c o d e - 4



c o d e - 5

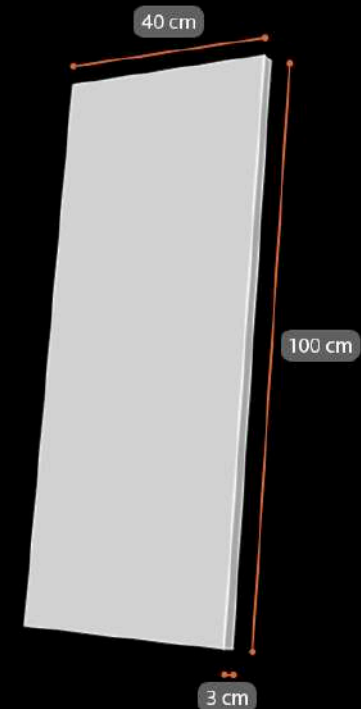
Linear Concrete Slab :

This concrete slab comes in four variations: plain, single-line, double-line, and five-line, with jointing incorporated at the end of each slab (no additional jointing cost during installation). It can be installed in various patterns, such as symmetry, repetition, rhythm, or even individually. The lines designed on this slab add a sense of order and beauty to your design and space.

Texture Quality:

Plain/Linear Texture

Dimintions:





ROYAB
Real Estate Department





Rock texture

Concrete Tile

- Dimensions | 100 cm * 50 cm
- Thickness | 4 cm
- Color quality |

COLOR PALLET



w h i t e



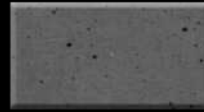
c l o u d y



c o d e - 1



c o d e - 2



c o d e - 3



c o d e - 4



c o d e - 5

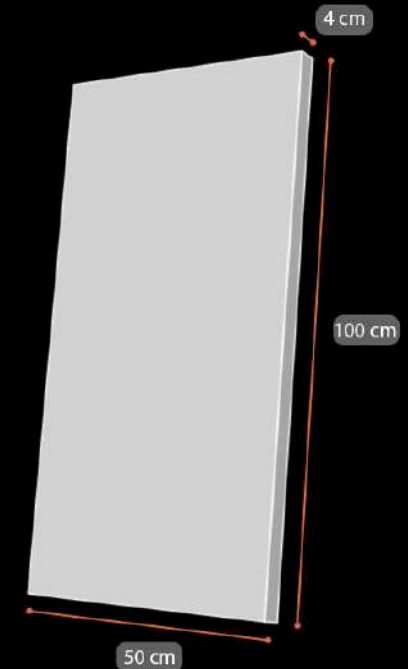
50*100 Rocky Concrete Slab :

The unique texture and pattern of this slab, combined with its relatively large dimensions, significantly enhance your design and space, providing a distinctive, natural, solid, and modern look for both cladding and flooring.

Texture Quality:

Rough Texture

Dimensions:







Rough texture

Concrete Tile

- Dimensions | 50 cm *50 cm
- Thickness | 4 cm
- Color quality |

COLOR PALLET



w h i t e



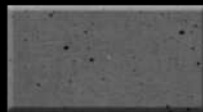
c l o u d y



c o d e - 1



c o d e - 2



c o d e - 3



c o d e - 4



c o d e - 5

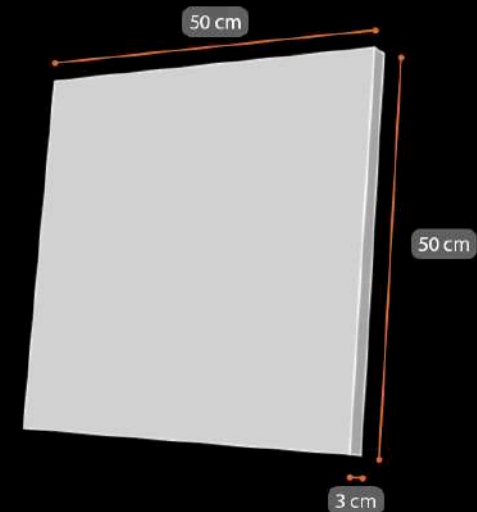
50*50 Concrete Tile :

This tile, due to its familiar look made from exposed concrete, has been highly popular among architects and builders since its introduction to the market. It remains one of the popular products of this material. The dimensions and form of this tile give a completely modern and industrial appearance.

Texture Quality:

Semi-Textured

Dimensions:







Linear texture

Concrete Tile

- Dimensions | 60 cm * 60 cm
- Thickness | 4 cm
- Color quality | 

COLOR PALLET



w h i t e



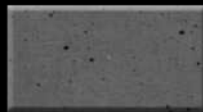
c l o u d y



c o d e - 1



c o d e - 2



c o d e - 3



c o d e - 4



c o d e - 5

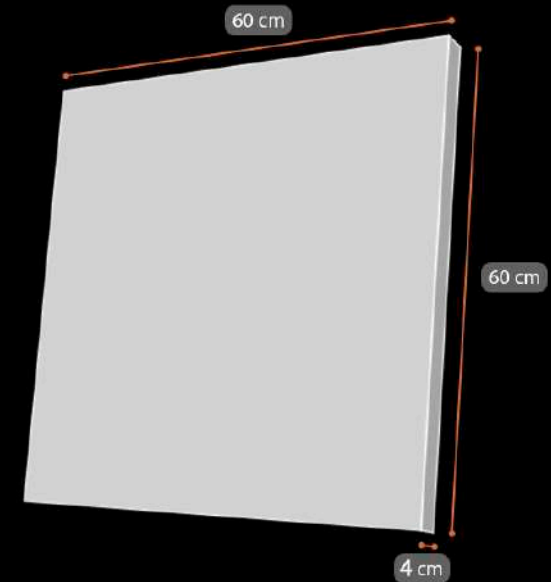
60*60 Rhythmic Concrete Slab :

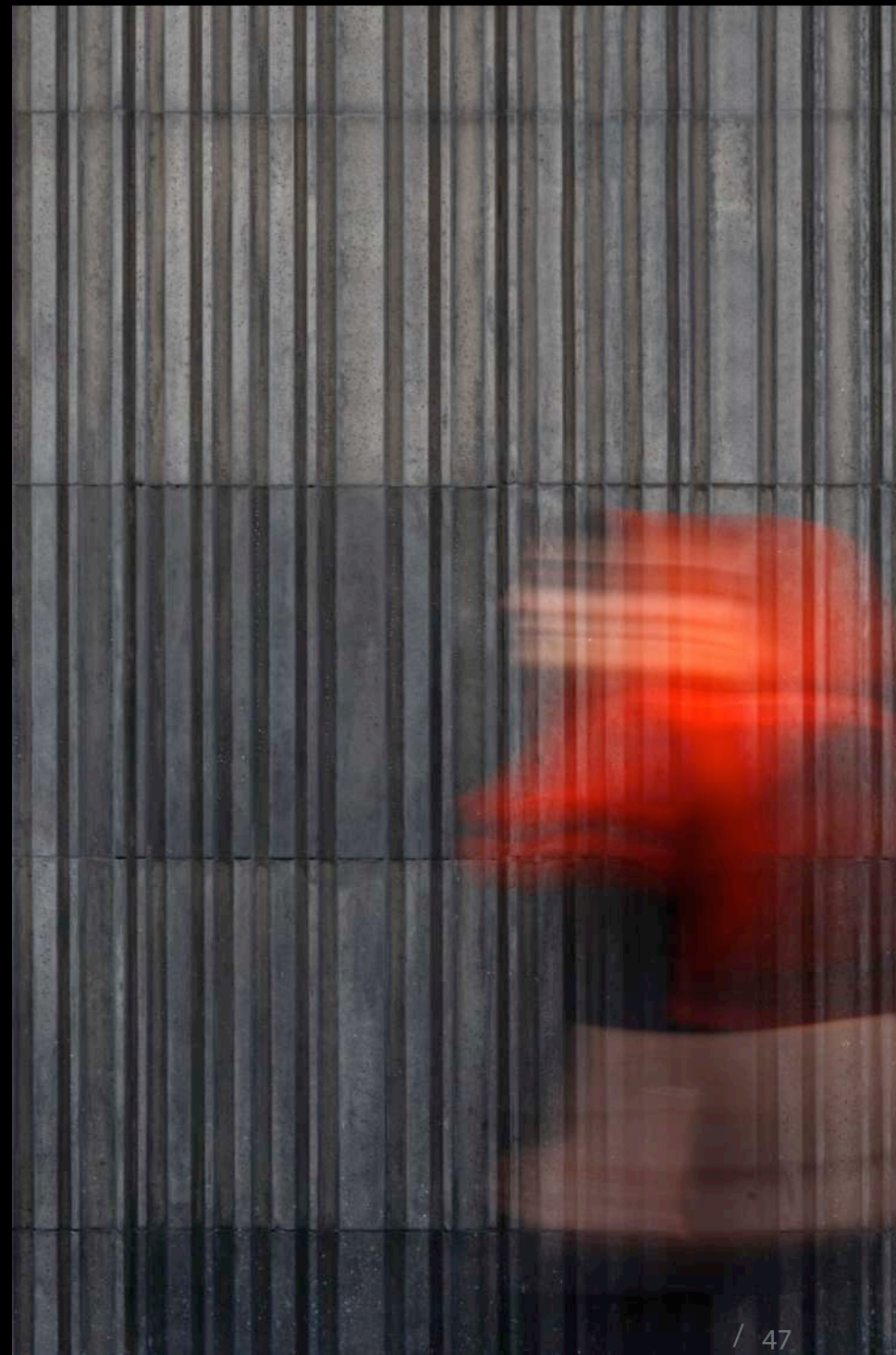
This square slab is highly practical both in installation and production. With its irregular lines, it can add a unique weight and rhythm to the lines in your design and space.

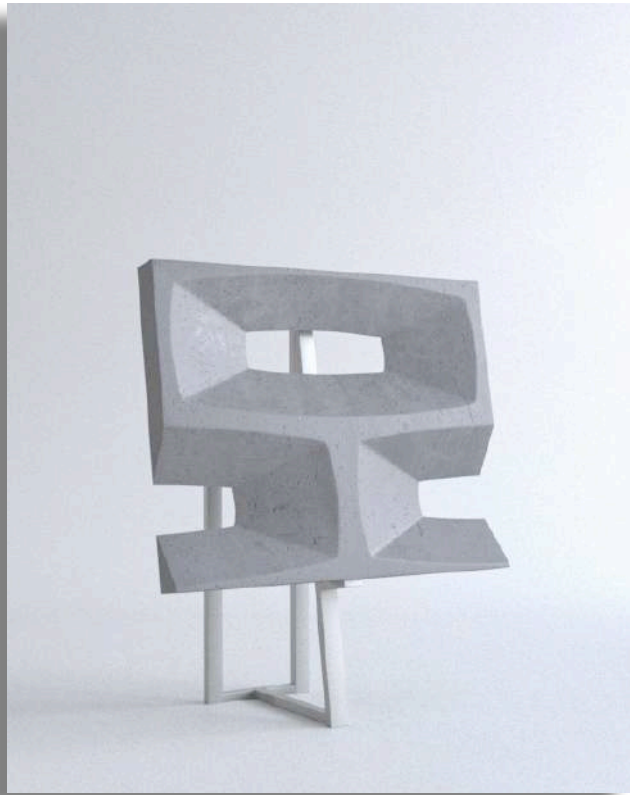
Texture Quality:

Plain/Linear Texture

Dimensions:







Rough texture

Concrete Tile

- Dimensions | 60 cm * 40 cm
- Thickness | 4 cm
- Color quality | 

COLOR PALLET



w h i t e



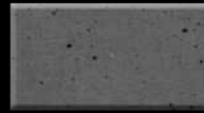
c l o u d y



c o d e - 1



c o d e - 2



c o d e - 3



c o d e - 4



c o d e - 5

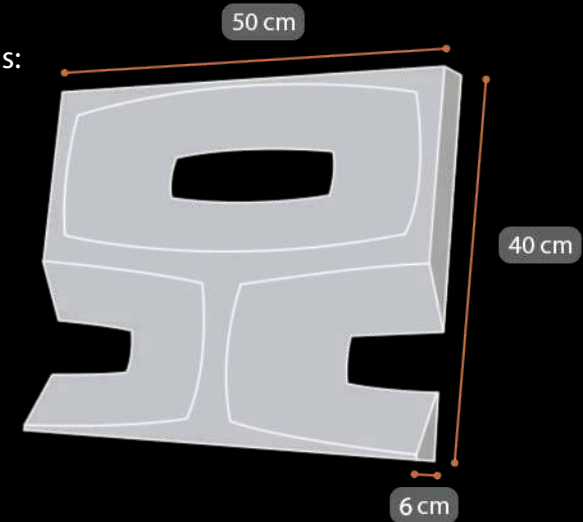
The 50*40 lattice tile :

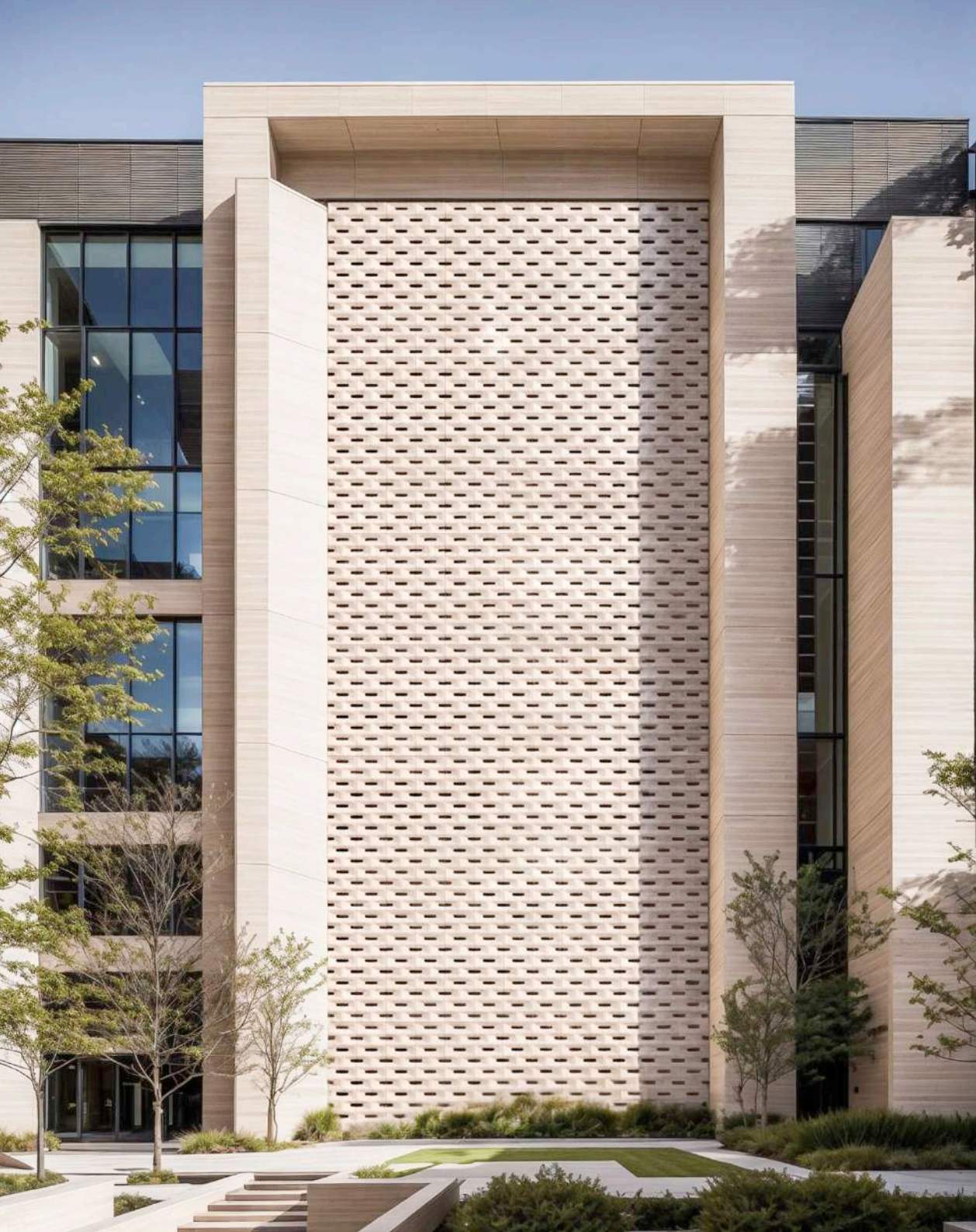
This tile allows light to enter while providing a secure and practical guardrail that is also visually appealing. It creates an attractive layer on the facade, producing an interesting play of light and shadow along with a balance of filled and empty spaces.


Texture Quality:

Plain Texture

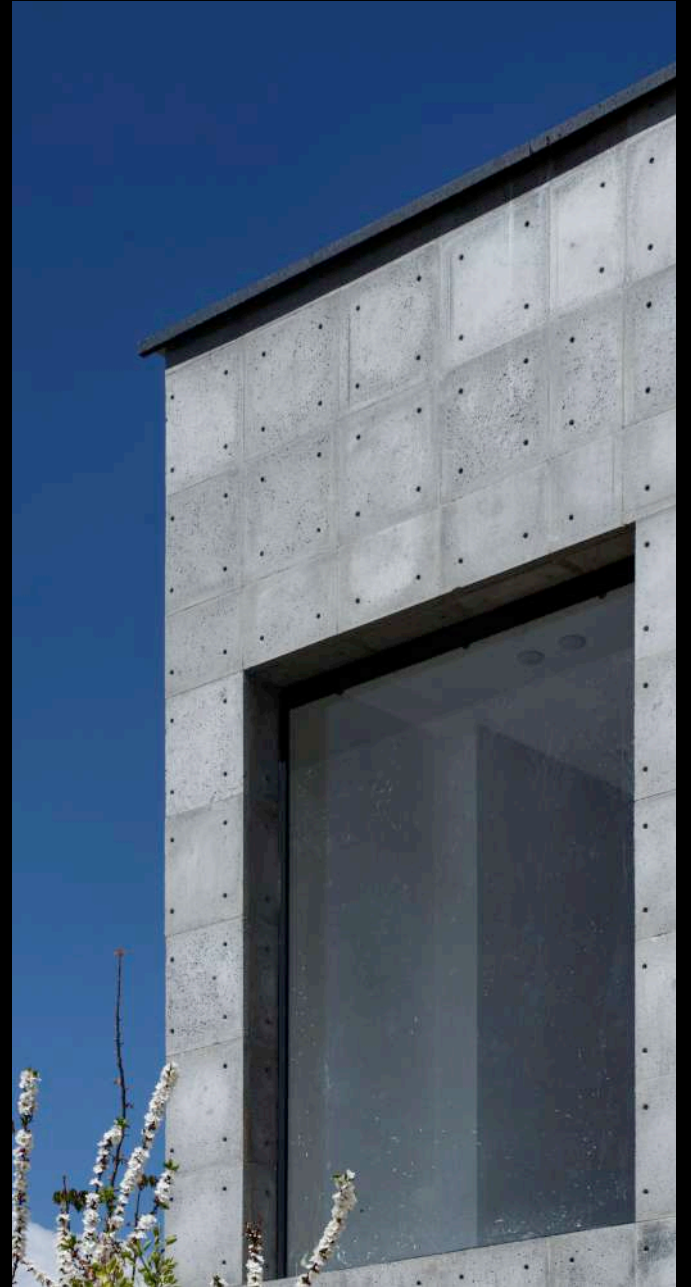
Dimensions:







Slab
executed samples

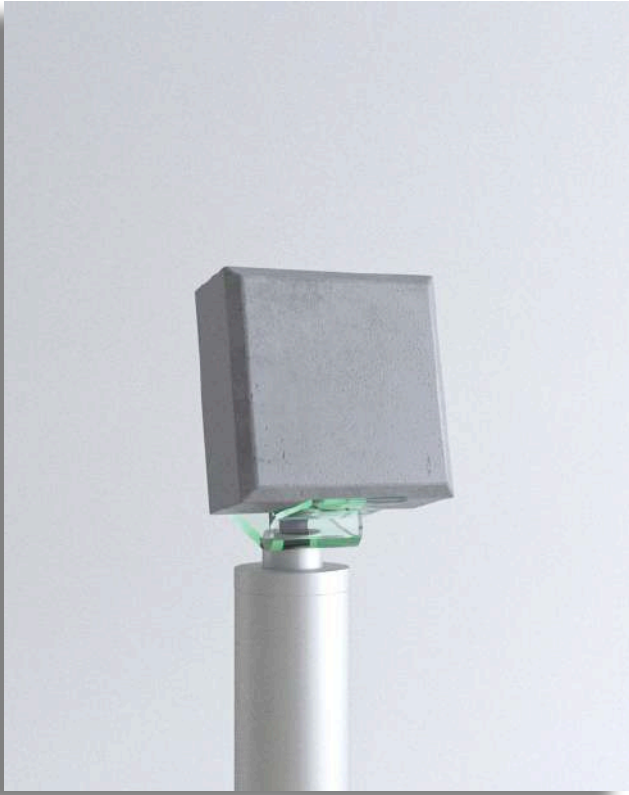


FLOOR

In addition to our exclusive flooring products, our other offerings are also suitable for practical flooring applications due to their high compressive strength, appropriate thickness, durability, and long-lasting color and form retention, all of which are inherent properties of concrete.







cubic clean texture

Concrete Flooring

- Dimensions | 10 cm * 10 cm 12 cm * 12 cm
- Thickness | 6.5 cm
- Color quality | 

COLOR PALLET



w h i t e



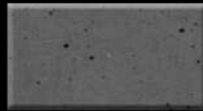
c l o u d y



c o d e - 1



c o d e - 2



c o d e - 3



c o d e - 4



c o d e - 5

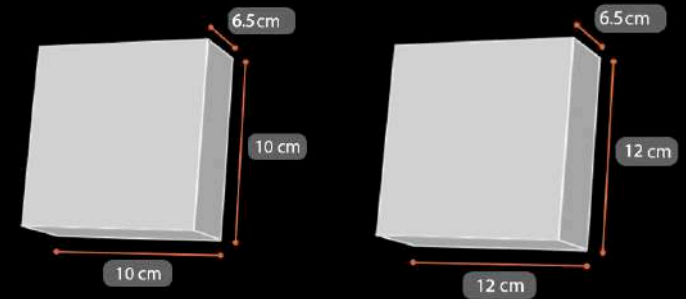
12*12 & 10*10 Concrete Paving Tile :

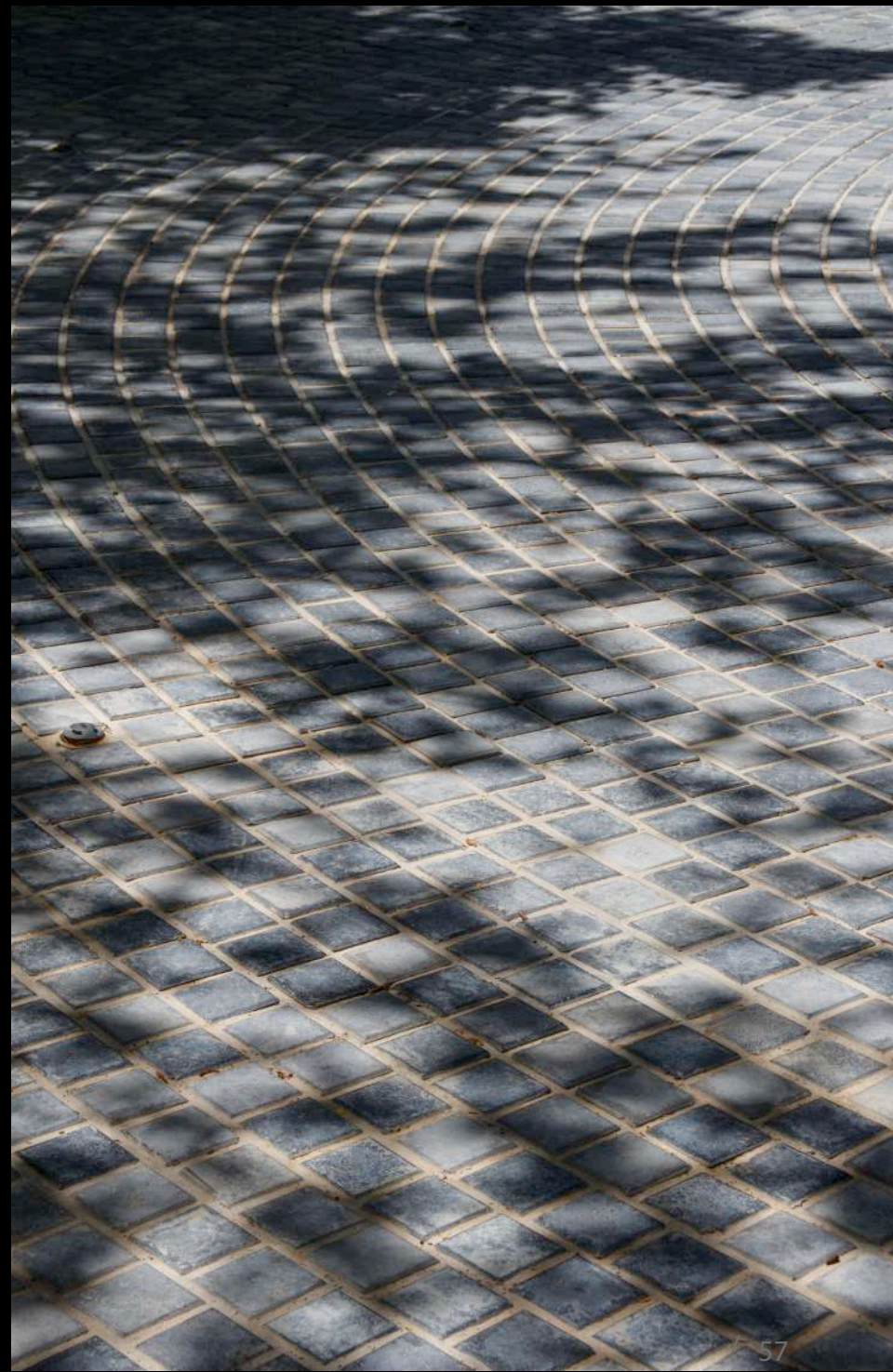
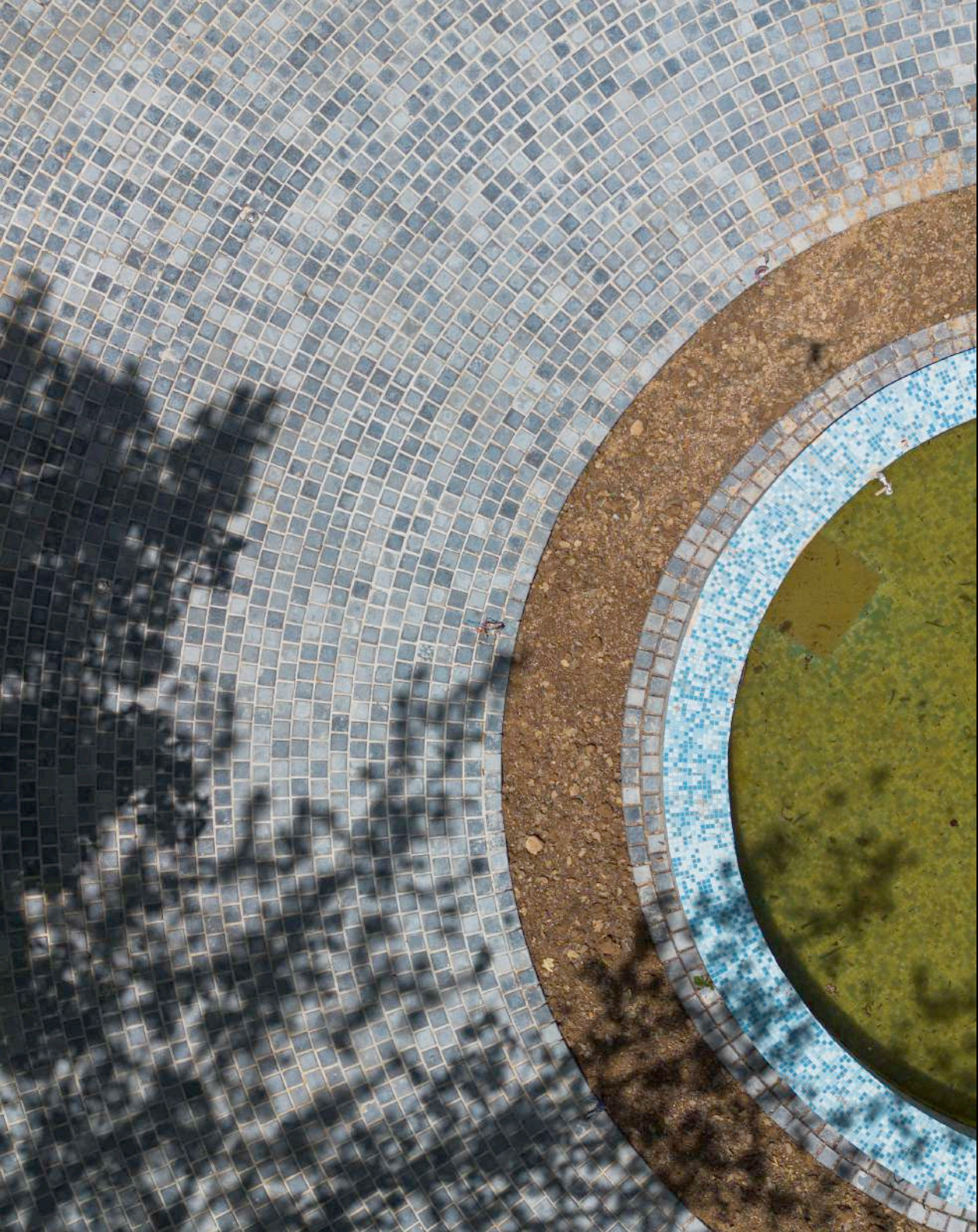
This paving tile, which has gained popularity among many architects and builders due to its beautiful and functional texture, can be used in driveways and outdoor areas. The compressive strength of concrete paving tiles ranges from 30 to 35 MPa.

Texture Quality:

Plain Texture

Dimensions:







cubic rock texture

Concrete Flooring

- Dimensions | 10 cm * 10 cm
- Thickness | 2.5 cm
- Color quality | 

COLOR PALLET



w h i t e



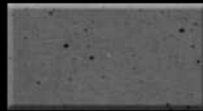
c l o u d y



c o d e - 1



c o d e - 2



c o d e - 3



c o d e - 4



c o d e - 5

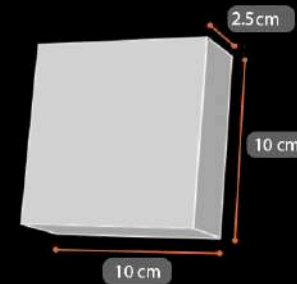
10*10 Rocky Concrete Paving Tile :

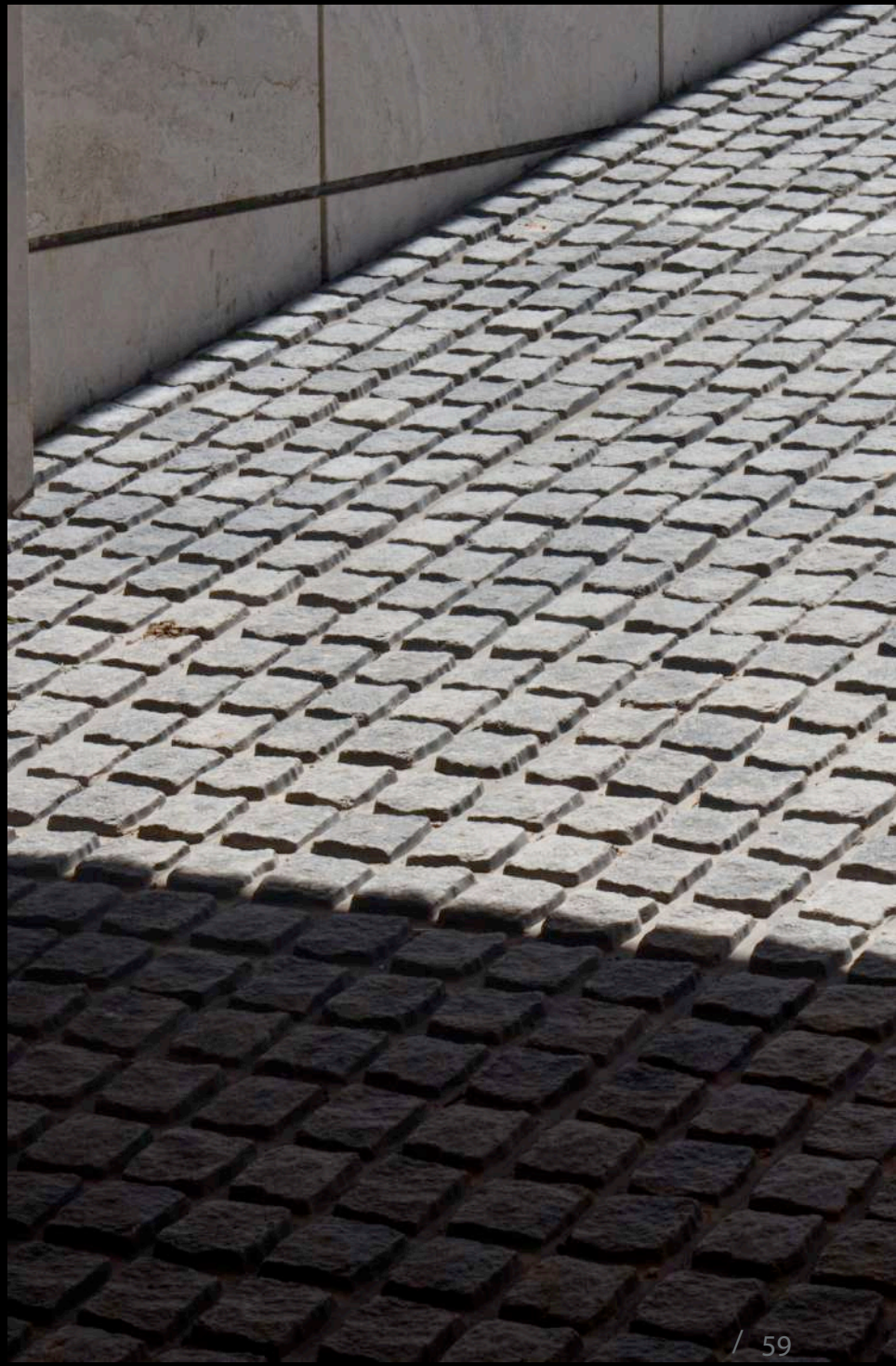
This product, due to its familiar dimensions and texture for architects and builders, can be an excellent choice for both facade and flooring. It is particularly ideal for vehicle-accessible areas, such as ramps. The compressive strength of concrete paving tiles ranges from 30 to 35 MPa.

Texture Quality:

RoughTexture

Dimensions:






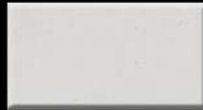


cubic clean texture

Concrete Flooring

- Dimensions | 10 cm * 20 cm / 12 cm * 24 cm
- Thickness | 6.5 cm
- Color quality | 

COLOR PALLET



w h i t e



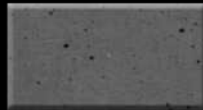
c l o u d y



c o d e - 1



c o d e - 2



c o d e - 3



c o d e - 4



c o d e - 5

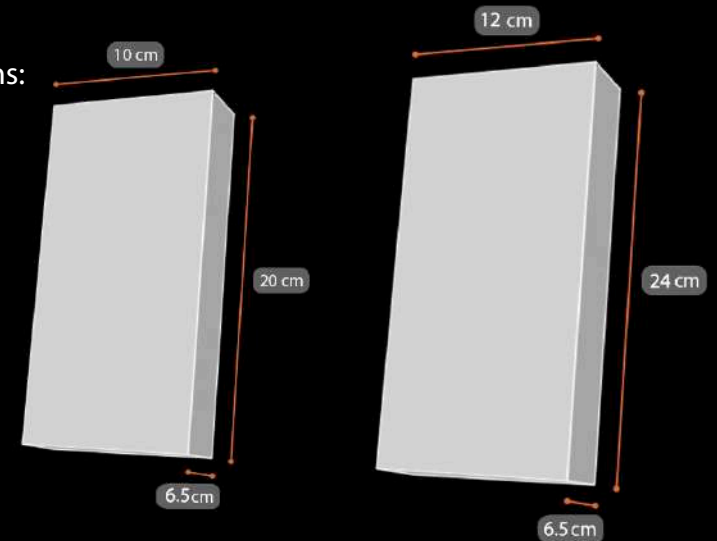
12*24 & 10*20 Concrete Paving Tile :

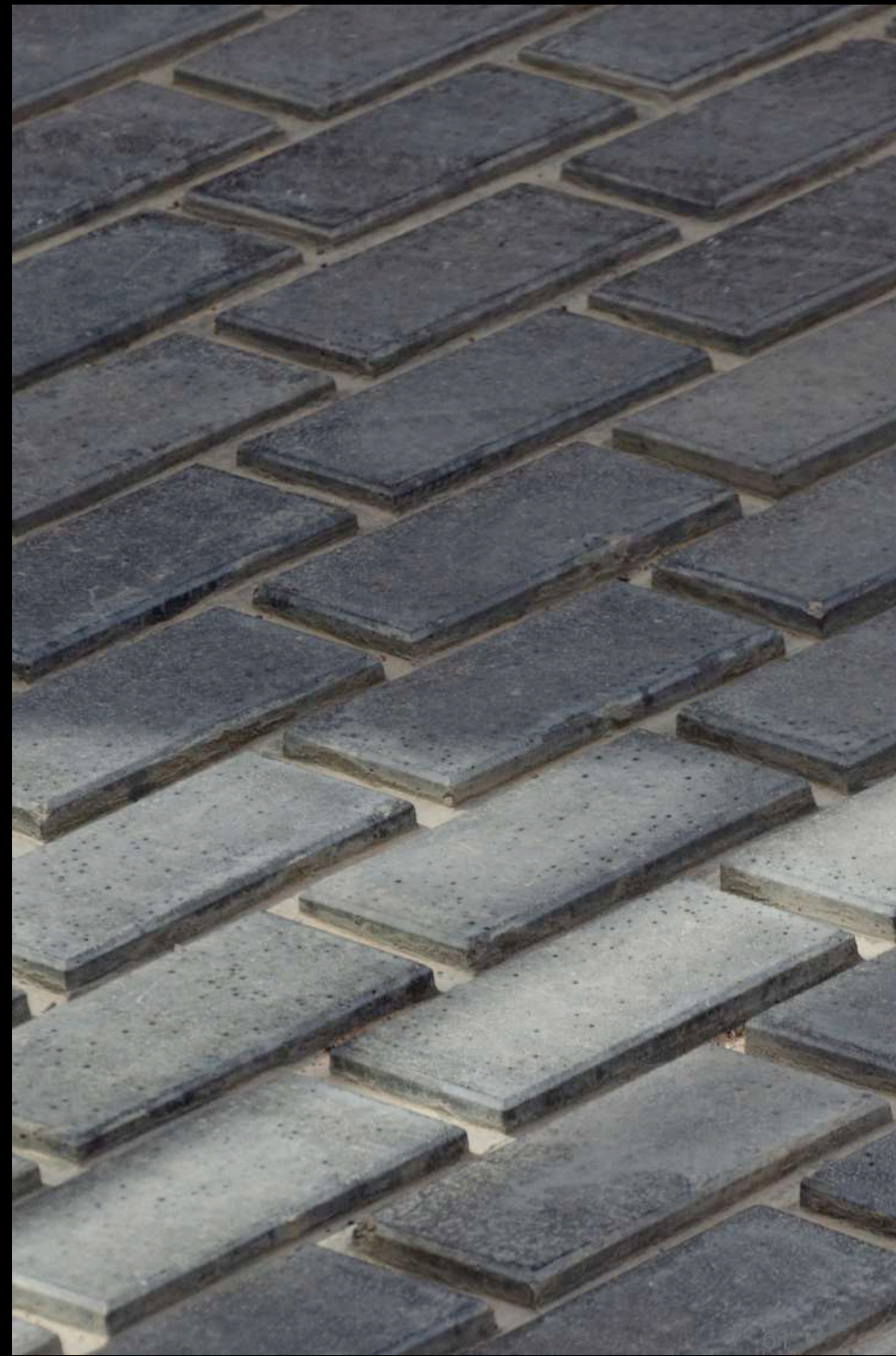
If you are looking for a durable product for landscaping and flooring with suitable dimensions and flexibility for various layouts, you can use this paving tile. The compressive strength of concrete paving tiles ranges from 30 to 35 MPa.

Texture Quality:

Plain Texture

Dimensions:







Cubic leather texture

Concrete Flooring

- Dimensions | 10 cm * 20 cm 12 cm * 24 cm
- Thickness | 4 cm
- Color quality | 

COLOR PALLET



w h i t e



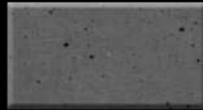
c l o u d y



c o d e - 1



c o d e - 2



c o d e - 3



c o d e - 4



c o d e - 5

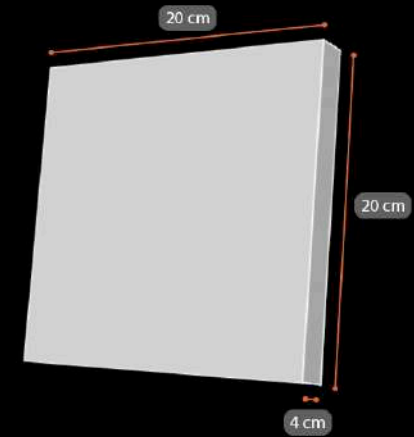
20*20 Leather Texture Concrete Paving Tile :

Undoubtedly, this is the best-selling flooring product from Benaraz. Its unique dimensions and texture have gained the trust of many architects and builders. The compressive strength of concrete paving tiles ranges from 30 to 35 MPa.

Texture Quality:

LeatherTexture

Dimintions:







Rough texture

Concrete Flooring

- Dimensions | 50 cm * 50 cm
- Thickness | 4 cm
- Color quality | 

COLOR PALLET



w h i t e



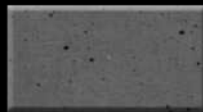
c l o u d y



c o d e - 1



c o d e - 2



c o d e - 3



c o d e - 4



c o d e - 5

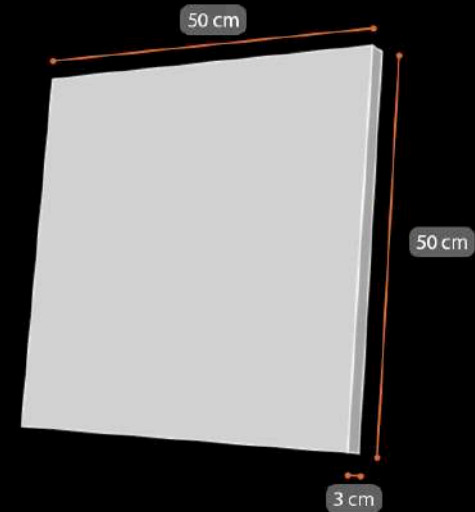
50*50 Chiseled Concrete Paving Tile :

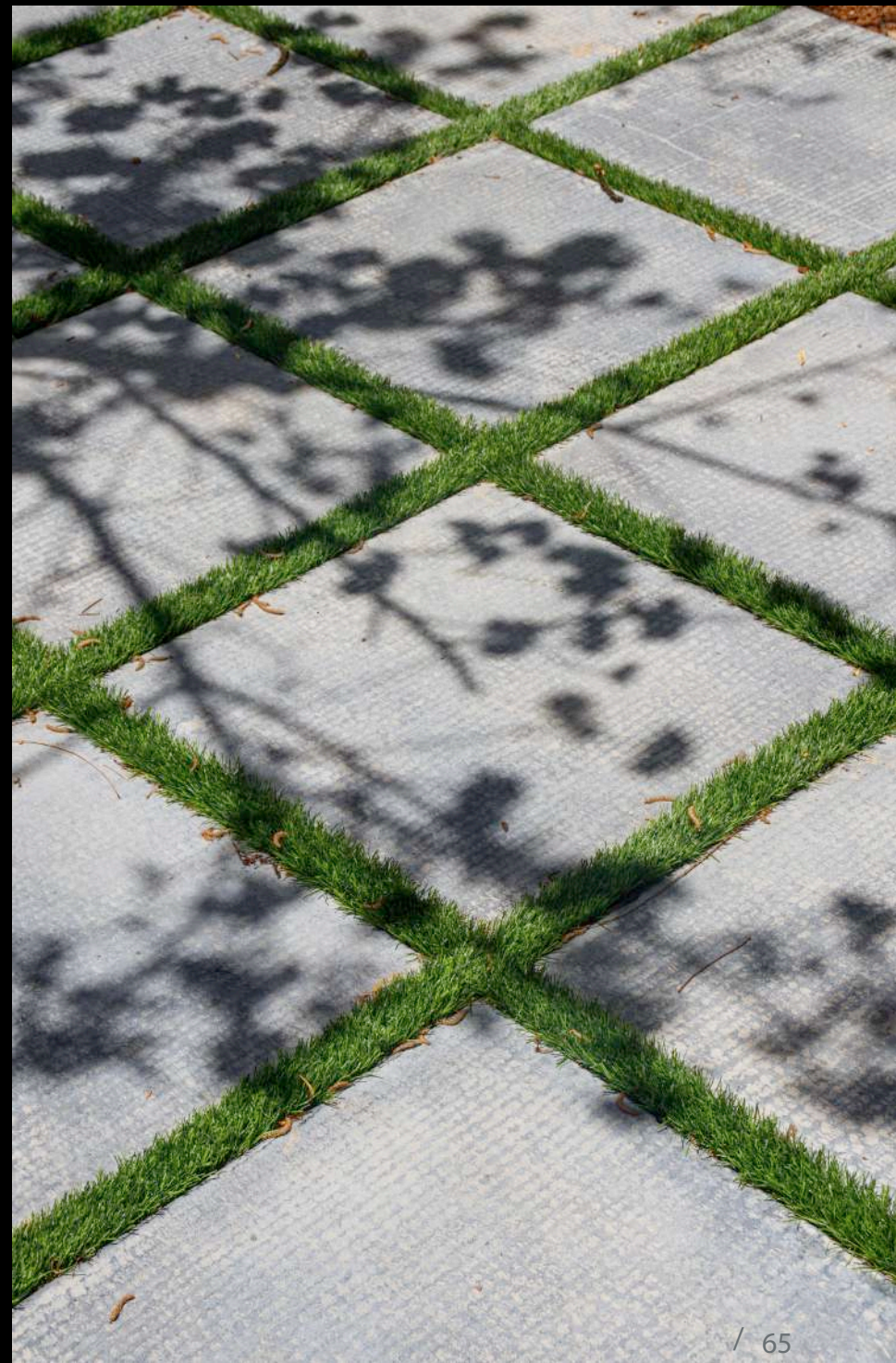
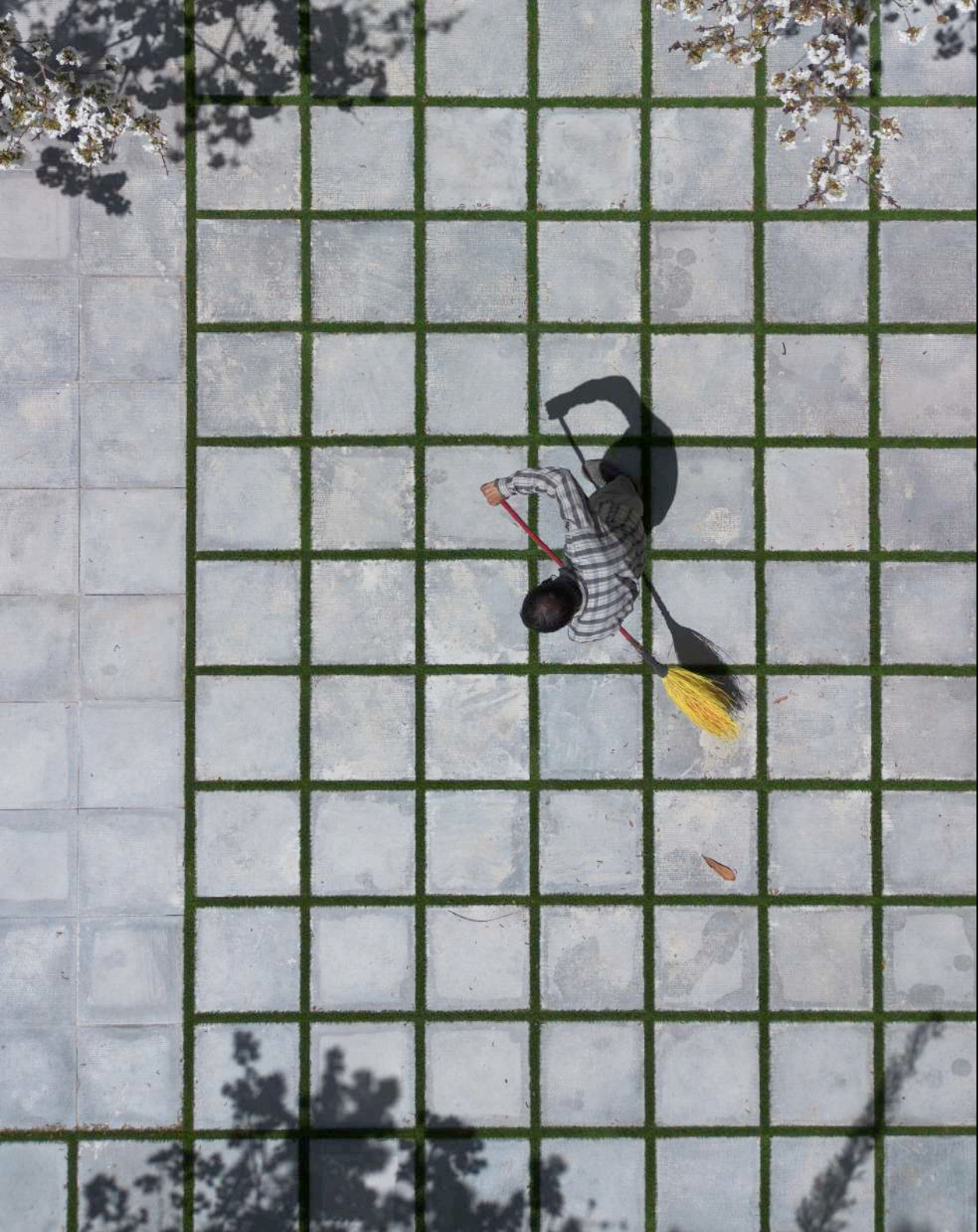
The square dimensions and highly attractive texture make this product both beautiful and practical for flooring. Its good friction surface makes it a smart choice for areas around pools. The compressive strength of concrete paving tiles ranges from 30 to 35 MPa.

Texture Quality:

Rough Texture

Dimensions:







Rock texture

Concrete Flooring

- Dimensions | 60 cm * 40 cm
- Thickness | 4 cm
- Color quality |

COLOR PALLET



w h i t e



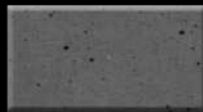
c l o u d y



c o d e - 1



c o d e - 2



c o d e - 3



c o d e - 4



c o d e - 5

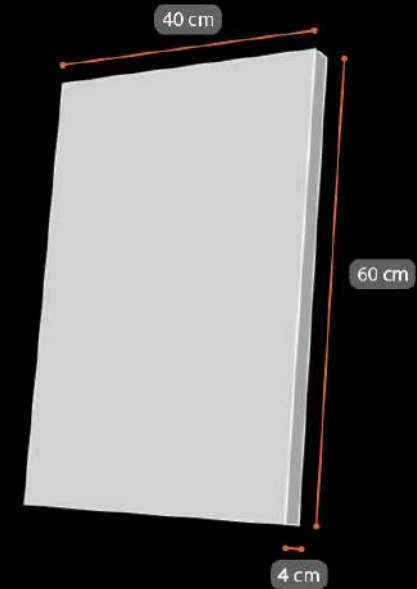
60*40 Rocky Concrete Paving Tile :

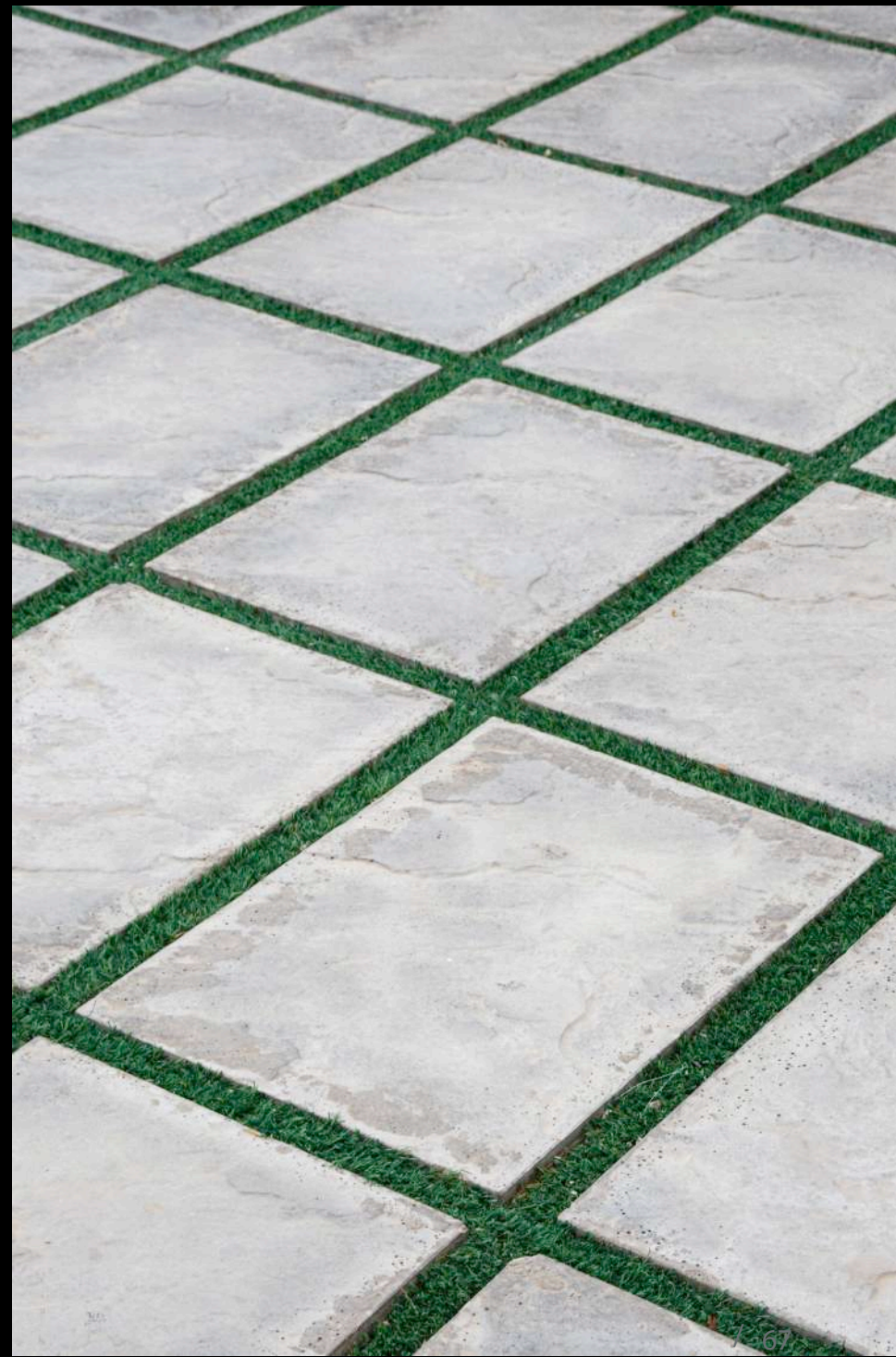
Undoubtedly, the high friction surface is the best feature of this product, making your space both aesthetically pleasing and highly functional in the long term. The compressive strength of concrete paving tiles ranges from 30 to 35 MPa.

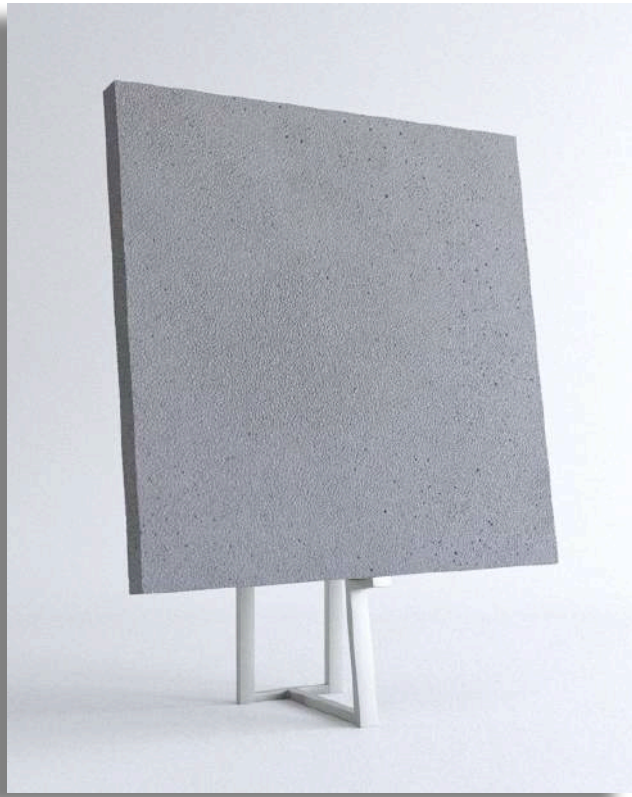
Texture Quality:

Rough Texture

Dimensions:





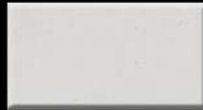


Leather texture

Concrete Flooring

- Dimensions | 60 cm * 60 cm
- Thickness | 4 cm
- Color quality | 

COLOR PALLET



w h i t e



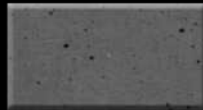
c l o u d y



c o d e - 1



c o d e - 2



c o d e - 3



c o d e - 4



c o d e - 5

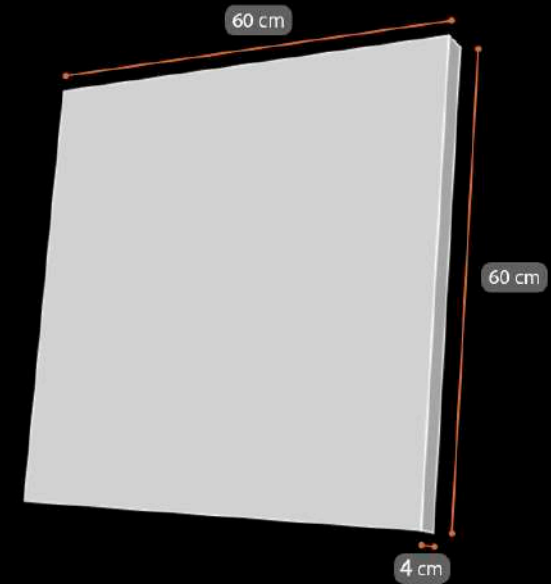
60*60 Leather-Finish Concrete Paving Tile :

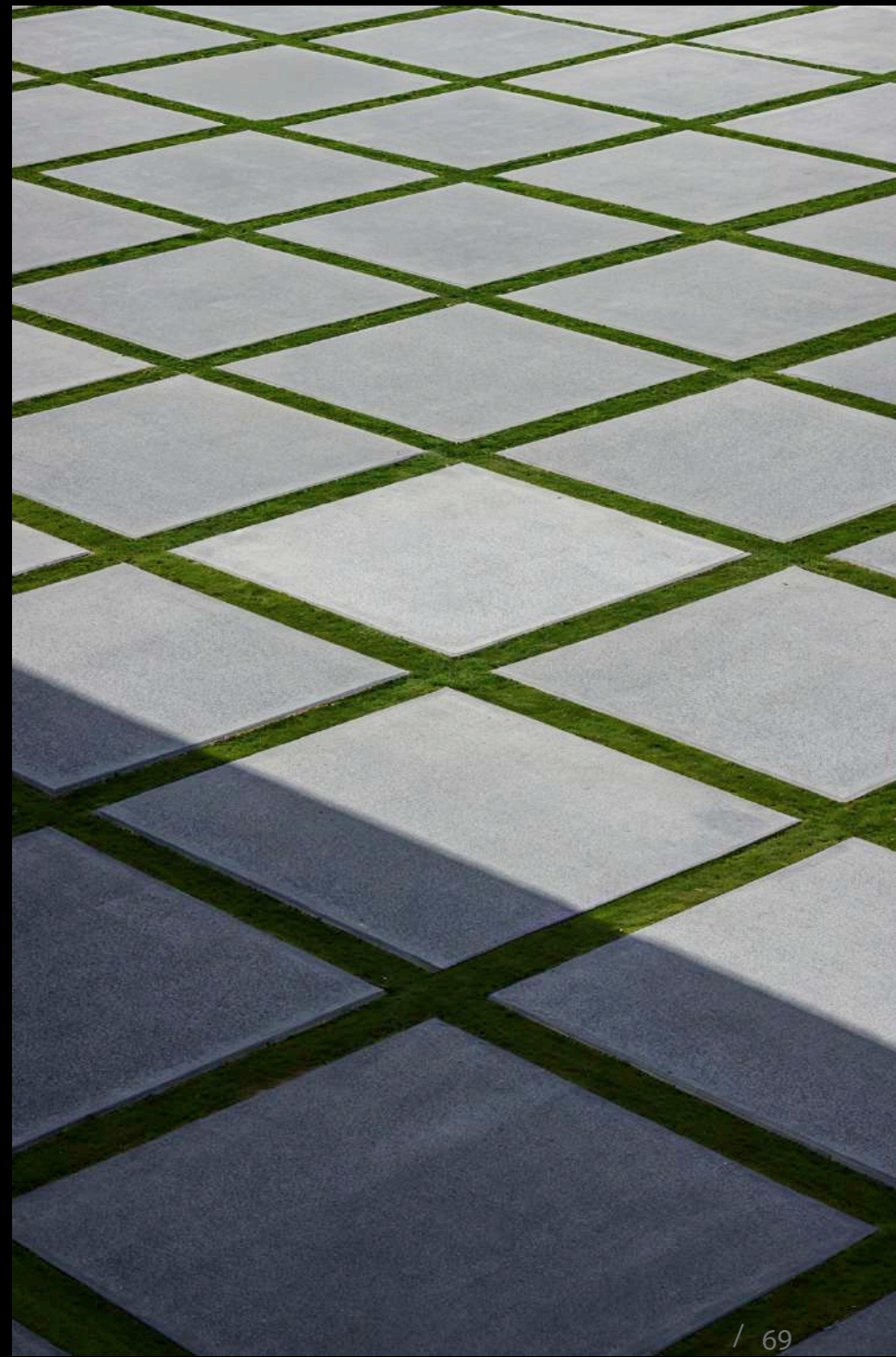
Undoubtedly, this is the best-selling flooring product from Benaraz. Its unique dimensions and texture have gained the trust of many architects and builders. The compressive strength of concrete paving tiles ranges from 30 to 35 MPa.

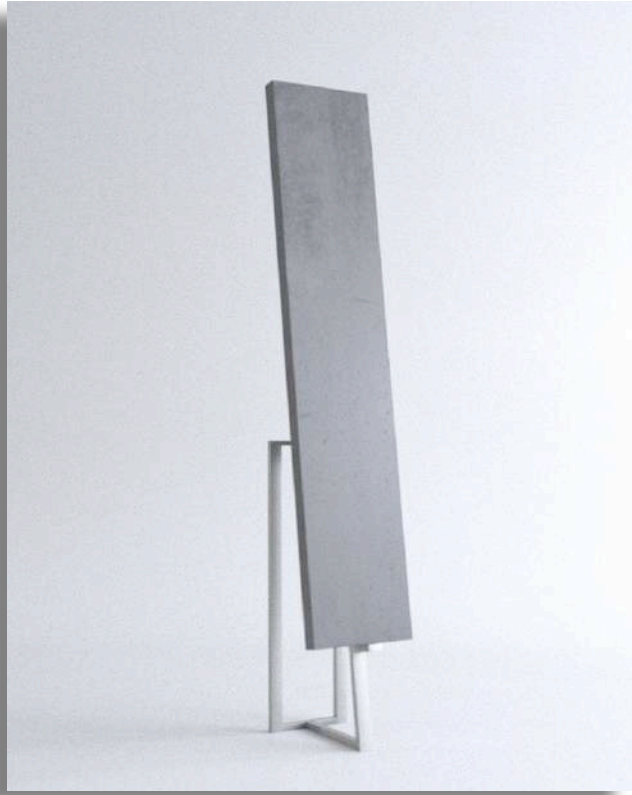
Texture Quality:

LeatherTexture

Dimensions:







Clean texture

Concrete Tiles

- Dimensions | 100 cm * 20 cm
- Thickness | 3 cm
- Color quality |

COLOR PALLET



w h i t e



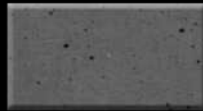
c l o u d y



c o d e - 1



c o d e - 2



c o d e - 3



c o d e - 4



c o d e - 5

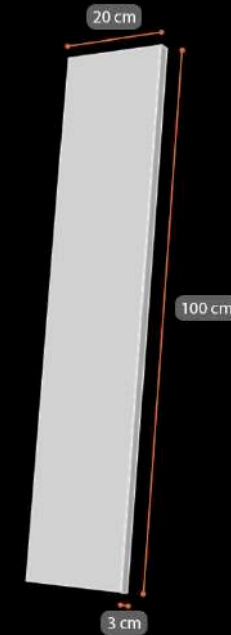
20*100 Concrete Slab :

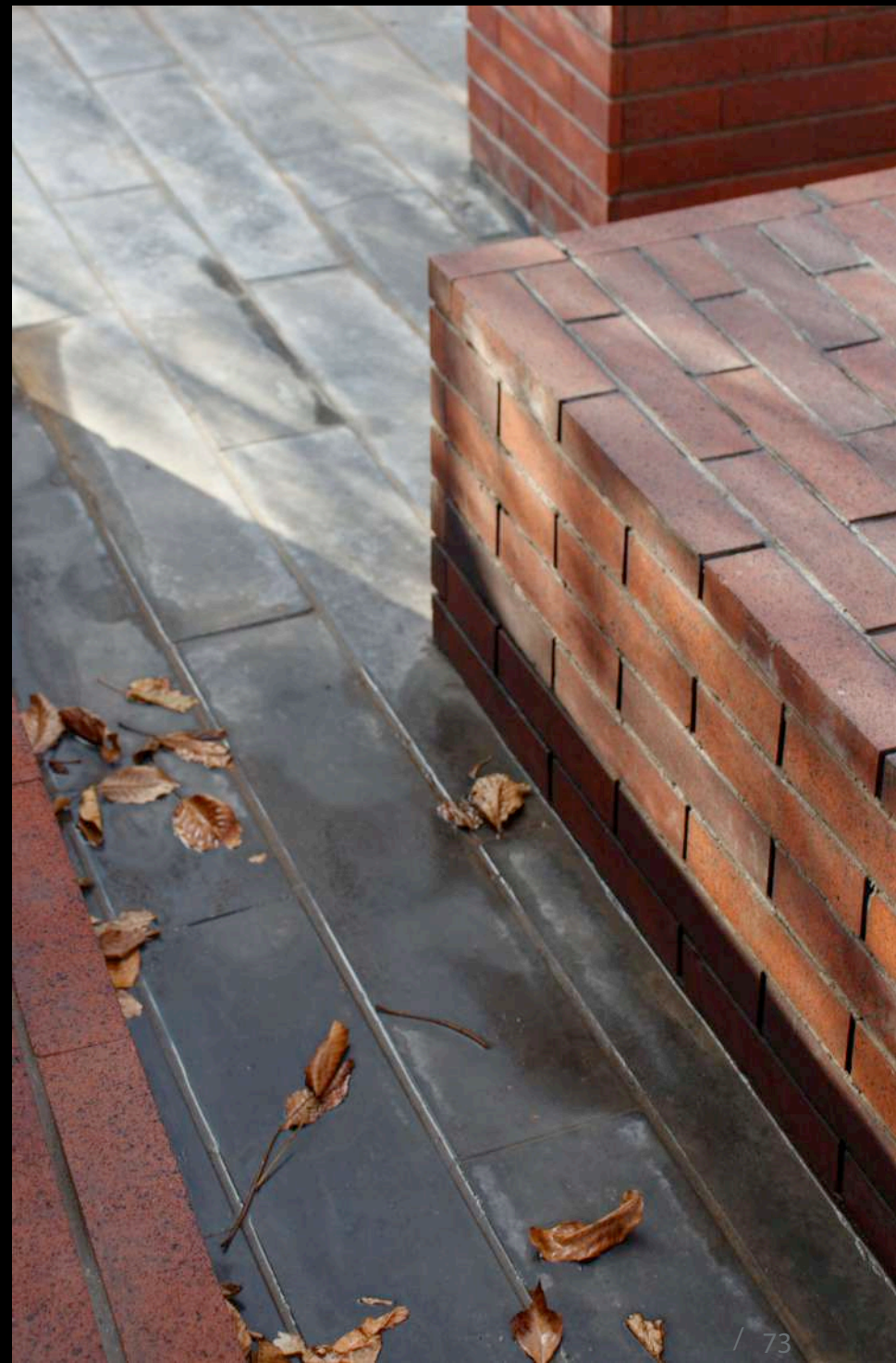
A product with suitable dimensions for both facade and flooring, featuring a completely simple texture and surface. This product can create an elegant elongated effect in your space, both horizontally and vertically.

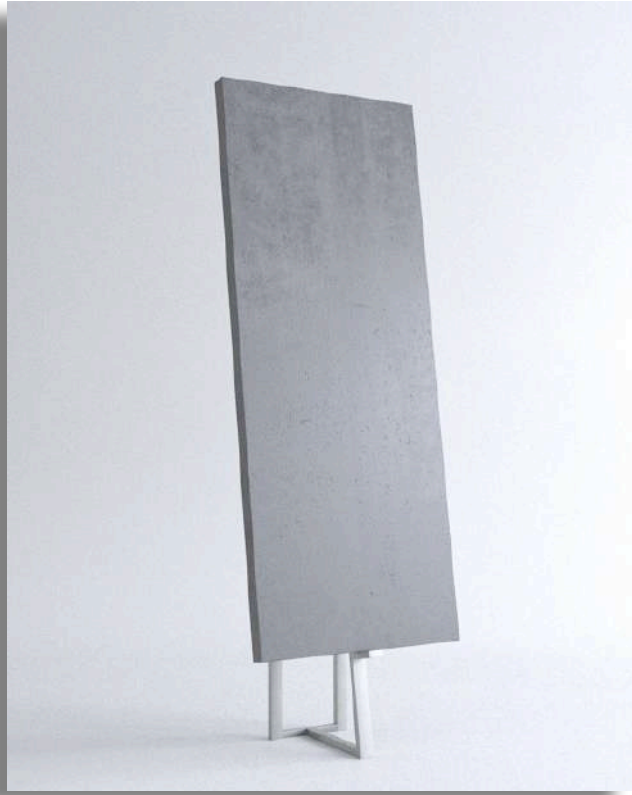
Texture Quality:

Plain Texture

Dimensions:







Clean texture

Concrete Flooring

- Dimensions | 160 cm * 40 cm
- Thickness | 3 cm
- Color quality |

COLOR PALLET



w h i t e



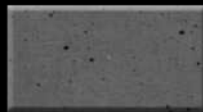
c l o u d y



c o d e - 1



c o d e - 2



c o d e - 3



c o d e - 4



c o d e - 5

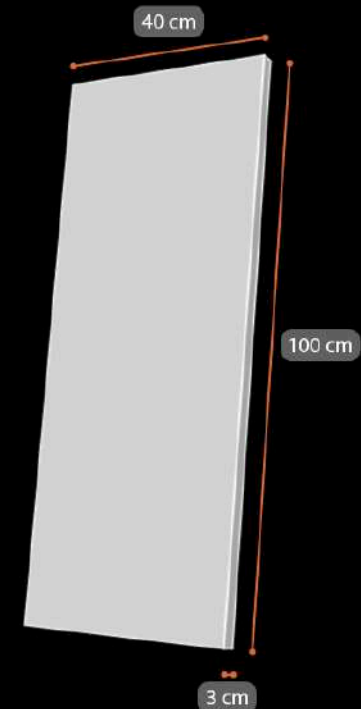
40*100 Concrete Slab :

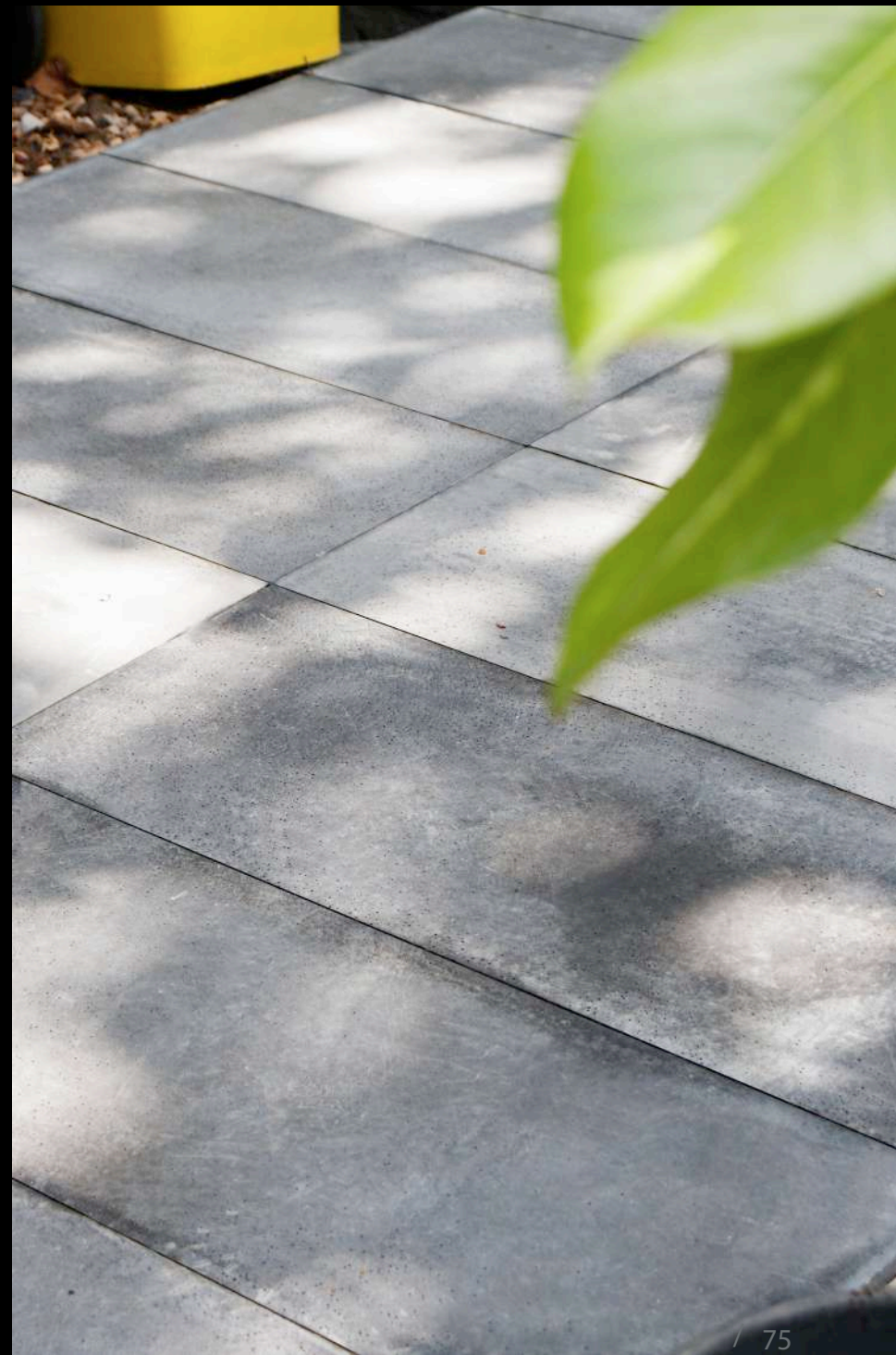
This concrete slab can be a good substitute for stone. With familiar and suitable dimensions for architects and builders, it features a smooth, texture-free surface, making it highly useful for exterior facade, flooring, and parking structure walls.

Texture Quality:

Plain Texture

Dimensions:







Rock texture

Concrete Tile

- Dimensions | 100 cm * 50 cm
- Thickness | 4 cm
- Color quality | 

COLOR PALLET



w h i t e



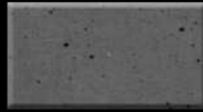
c l o u d y



c o d e - 1



c o d e - 2



c o d e - 3



c o d e - 4



c o d e - 5

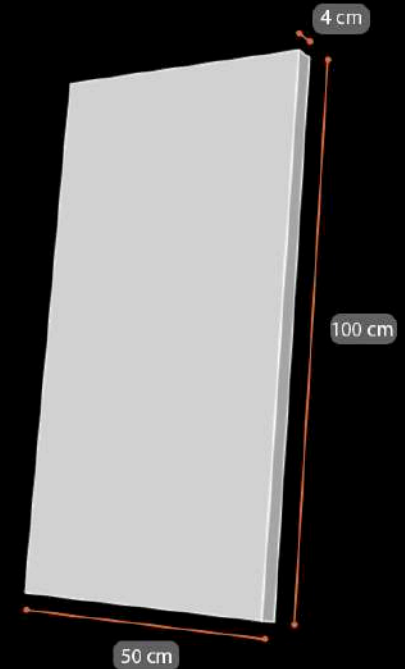
50*100 Rocky Concrete Slab :

The unique texture and pattern of this slab, combined with its relatively large dimensions, significantly enhance your design and space, providing a distinctive, natural, solid, and modern look for both cladding and flooring.

Texture Quality:

Rough Texture

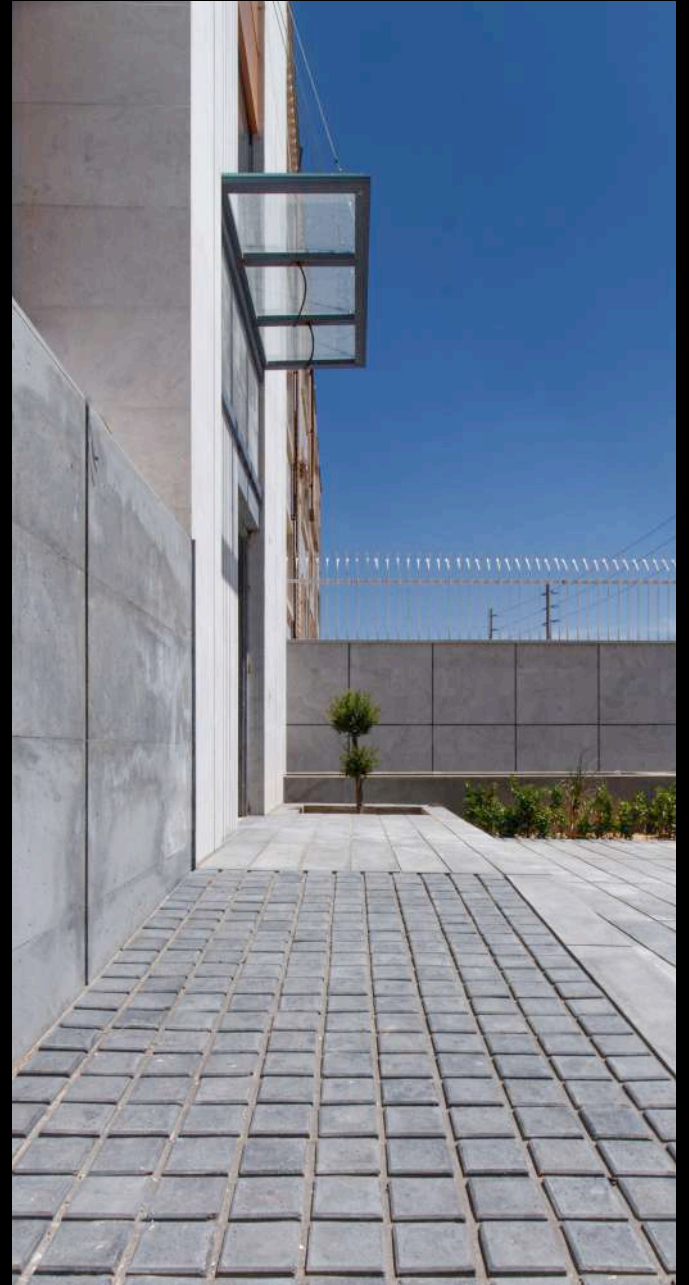
Dimensions:





An aerial photograph of a paved area, likely a walkway or plaza, featuring a series of vertical green stripes. A person is standing on the left side of the image, casting a long shadow across the pavement. The stripes are evenly spaced and run parallel to each other. The overall scene is brightly lit, suggesting a sunny day.

Flooring
executed samples



Approach

Bana Raz Company is striving to produce and introduce a new and up-to-date generation of building products called “Reinforced Lightweight Concrete.” With its unique nature, it aims to address the weaknesses of previous generations while emphasizing the strengths and potential of this modern product.

Bana Raz, with its utmost effort, seeks to foster creativity and deliver acceptable quality in its products, following a modern approach while staying true to architectural principles. By doing so, it can become a valuable and effective contributor to this challenging yet rewarding path. This Iranian product is a testament to art and innovation in Iran, particularly in Shiraz.

